

For Research Use Only

TOM70 Recombinant monoclonal antibody, PBS Only (Detector)

Catalog Number: 86840-1-PBS



Basic Information

Catalog Number: 86840-1-PBS	GenBank Accession Number: BC052994	Purification Method: Protein A purification
Size: 100ug , Concentration: 1 mg/ml by Nanodrop;	GeneID (NCBI): 9868	CloneNo.: 25187487
Source: Rabbit	UNIPROT ID: O94826	
Isotype: IgG	Full Name: translocase of outer mitochondrial membrane 70 homolog A (S. cerevisiae)	
Immunogen Catalog Number: AG6027	Calculated MW: 67 kDa	

Applications

Tested Applications:
Cytometric bead array, Indirect ELISA

Species Specificity:
human

Product Information

86840-1-PBS targets TOM70 as part of a matched antibody pair:

MP02700-1: 86840-2-PBS capture and 86840-1-PBS detection (validated in Cytometric bead array)

Unconjugated rabbit recombinant monoclonal antibody in PBS only (BSA and azide free) storage buffer at a concentration of 1 mg/mL, ready for conjugation. Created using Proteintech's proprietary in-house recombinant technology. Recombinant production enables unrivalled batch-to-batch consistency, easy scale-up, and future security of supply.

This conjugation ready format makes antibodies ideal for use in many applications including: ELISAs, multiplex assays requiring matched pairs, mass cytometry, and multiplex imaging applications. Antibody use should be optimized by the end user for each application and assay.

Storage

Storage:
Store at -80°C.

Storage Buffer:
PBS only, pH7.3

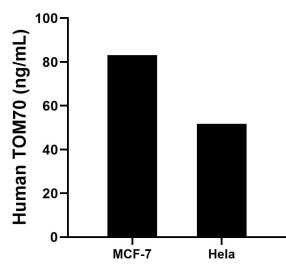
For technical support and original validation data for this product please contact:

T: 1 (888) 4PTGLAB (1-888-478-4522) (toll free in USA), or 1(312) 455-8498 (outside USA)

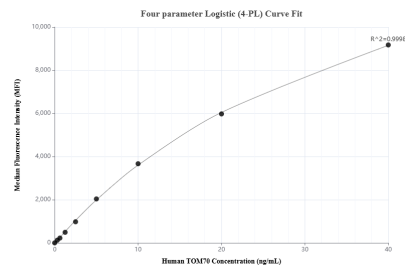
E: proteintech@ptglab.com
W: ptglab.com

This product is exclusively available under Proteintech Group brand and is not available to purchase from any other manufacturer.

Selected Validation Data



The mean TOM70 concentration was determined to be 83.1 ng/mL in MCF-7 cell extract based on a 1.2 mg/mL extract load, 51.7 ng/mL in HeLa cell extract based on a 1.2 mg/mL extract load.



Cytometric bead array standard curve of MP02700-1, TOM70 Recombinant Matched Antibody Pair, PBS Only. Capture antibody: 86840-2-PBS. Detection antibody: 86840-1-PBS. Standard: Ag6027. Range: 0.312-40 ng/mL.