

For Research Use Only

# MMP10 Recombinant monoclonal antibody, PBS Only (Capture)

Catalog Number: 86845-2-PBS



## Basic Information

<b>Catalog Number:</b> 86845-2-PBS	<b>GenBank Accession Number:</b> NM_002425.3	<b>Purification Method:</b> Protein A purification
<b>Size:</b> 100ug, Concentration: 1 mg/ml by Nanodrop;	<b>GeneID (NCBI):</b> 4319	<b>CloneNo.:</b> 251067G2
<b>Source:</b> Rabbit	<b>UNIPROT ID:</b> P09238	
<b>Isotype:</b> IgG	<b>Full Name:</b> matrix metalloproteinase 10 (stromelysin 2)	
<b>Immunogen Catalog Number:</b> EG3038	<b>Calculated MW:</b> 54 kDa	

## Applications

**Tested Applications:**  
Cytometric bead array, Sandwich ELISA, Indirect ELISA

**Species Specificity:**  
human

## Product Information

86845-2-PBS targets MMP10 as part of a matched antibody pair:

MP02702-1: 86845-2-PBS capture and 86845-1-PBS detection (validated in Cytometric bead array)

MP02702-2: 86845-2-PBS capture and 86845-3-PBS detection (validated in Sandwich ELISA)

Unconjugated rabbit recombinant monoclonal antibody in PBS only (BSA and azide free) storage buffer at a concentration of 1 mg/mL, ready for conjugation. Created using Proteintech's proprietary in-house recombinant technology. Recombinant production enables unrivalled batch-to-batch consistency, easy scale-up, and future security of supply.

This conjugation ready format makes antibodies ideal for use in many applications including: ELISAs, multiplex assays requiring matched pairs, mass cytometry, and multiplex imaging applications. Antibody use should be optimized by the end user for each application and assay.

## Storage

**Storage:**  
Store at -80°C.  
**Storage Buffer:**  
PBS only, pH7.3

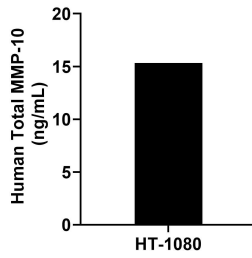
For technical support and original validation data for this product please contact:

T: 1 (888) 4PTGLAB (1-888-478-4522) (toll free in USA), or 1(312) 455-8498 (outside USA)

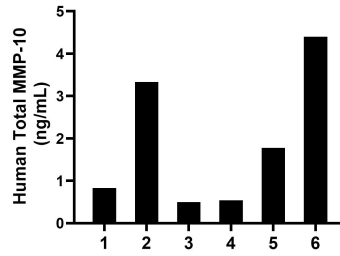
E: [proteintech@ptglab.com](mailto:proteintech@ptglab.com)  
W: [ptglab.com](http://ptglab.com)

**This product is exclusively available under Proteintech Group brand and is not available to purchase from any other manufacturer.**

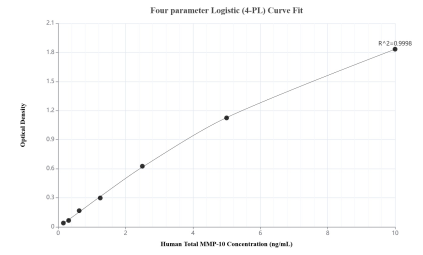
## Selected Validation Data



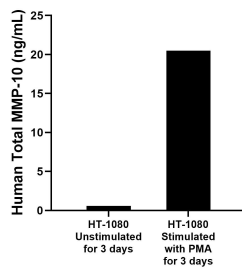
HT-1080 were cultured in DMEM supplemented with 10% fetal bovine serum, 2.5 mM L-glutamine, 100 U/mL penicillin, and 100 µg/mL streptomycin sulfate. An aliquot of the cell culture supernate was removed, assayed for human Total MMP-10, and measured 15.32 ng/mL.



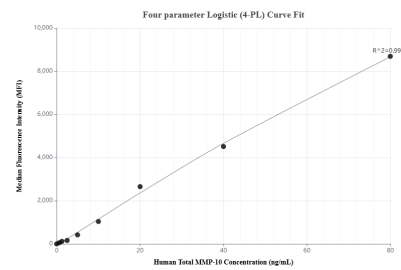
Plasma of six individual healthy human donors was measured. The Total MMP-10 concentration of detected samples was determined to be 1.90 ng/mL with a range of 0.50-4.40 ng/mL.



Sandwich ELISA standard curve of MP02702-2, Human Total MMP-10 Recombinant Matched Antibody Pair - PBS only. 86845-2-PBS was coated to a plate as the capture antibody and incubated with serial dilutions of standard Eg3038. 86845-3-PBS was HRP conjugated as the detection antibody. Range: 0.156-10 ng/mL.



HT-1080 human fibrosarcoma cells were cultured in DMEM with 10% fetal bovine serum, 2 mM L-glutamine, 100 U/mL penicillin, and 100 µg/mL streptomycin sulfate. Cells were stimulated with PMA. An aliquot of the cell culture supernate was removed, assayed for human Total MMP-10, and measured 20.5 ng/mL.



Cytometric bead array standard curve of MP02702-1, Total MMP-10 Recombinant Matched Antibody Pair, PBS Only. Capture antibody: 86845-2-PBS. Detection antibody: 86845-1-PBS. Standard: Eg3038. Range: 0.625-80 ng/mL.