

For Research Use Only

SPIN1 Recombinant monoclonal antibody, PBS Only (Capture)

Catalog Number: 86848-3-PBS



Basic Information

Catalog Number: 86848-3-PBS	GenBank Accession Number: BC013571	Purification Method: Protein A purification
Size: 100ug, Concentration: 1 mg/ml by Nanodrop;	GeneID (NCBI): 10927	CloneNo.: 251836E2
Source: Rabbit	UNIPROT ID: Q9Y657	
Isotype: IgG	Full Name: spindlin 1	
Immunogen Catalog Number: AG2750	Calculated MW: 262 aa, 30 kDa	
	Observed MW: 30 kDa	

Applications

Tested Applications:
WB, Cytometric bead array, Sandwich ELISA, Indirect ELISA

Species Specificity:
human, mouse, rat

Product Information

86848-3-PBS targets SPIN1 as part of a matched antibody pair:

MP02730-1: 86848-3-PBS capture and 86848-2-PBS detection (validated in Cytometric bead array)

MP02730-2: 86848-3-PBS capture and 86848-4-PBS detection (validated in Sandwich ELISA)

Unconjugated rabbit recombinant monoclonal antibody in PBS only (BSA and azide free) storage buffer at a concentration of 1 mg/mL, ready for conjugation. Created using Proteintech's proprietary in-house recombinant technology. Recombinant production enables unrivalled batch-to-batch consistency, easy scale-up, and future security of supply.

This conjugation ready format makes antibodies ideal for use in many applications including: ELISAs, multiplex assays requiring matched pairs, mass cytometry, and multiplex imaging applications. Antibody use should be optimized by the end user for each application and assay.

Background Information

SPIN1 (Spindlin 1) is a histone methylation reader, which recognizes trimethylated histone H3 lysine 4 through the protein-protein interaction. SPIN1 was initially found in ovarian cancer via searching ovarian cancer-related genes. It is overexpressed in ovarian cancer tissue, which exhibits a high homology to mouse Spin (Spindlin) gene. Signaling pathways responsible for SPIN1 functions include PI3K/Akt, Wnt and RET that are highly relevant to tumorigenesis. (PMID: 34492335, PMID: 31790762)

Storage

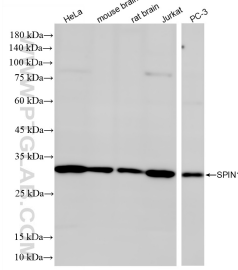
Storage:
Store at -80°C.

Storage Buffer:
PBS only, pH7.3

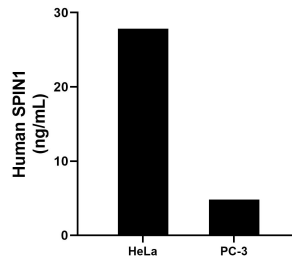
For technical support and original validation data for this product please contact:
T: 1 (888) 4PTGLAB (1-888-478-4522) (toll free in USA), or 1(312) 455-8498 (outside USA)
E: proteintech@ptglab.com
W: ptglab.com

This product is exclusively available under Proteintech Group brand and is not available to purchase from any other manufacturer.

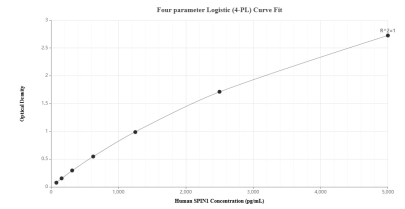
Selected Validation Data



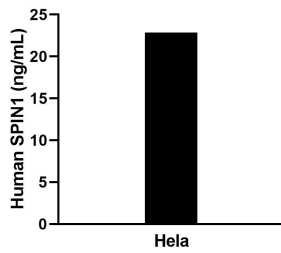
Various lysates were subjected to SDS PAGE followed by western blot with 86848-3-RR (SPIN1 antibody) at dilution of 1:5000 incubated at room temperature for 1.5 hours. This data was developed using the same antibody clone with 86848-3-PBS in a different storage buffer formulation.



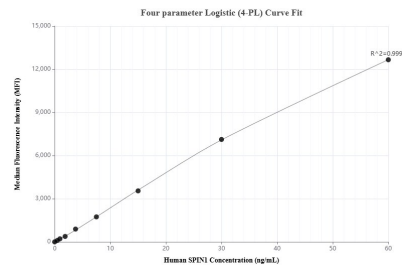
The mean SPIN1 concentration was determined to be 27.85 ng/mL in HeLa cell extract based on a 1.2 mg/mL extract load and 4.80 ng/mL in PC-3 cell extract based on a 1.2 mg/mL extract load.



Sandwich ELISA standard curve of MP02730-2, Human SPIN1 Recombinant Matched Antibody Pair - PBS only. 86848-3-PBS was coated to a plate as the capture antibody and incubated with serial dilutions of standard Ag2750. 86848-4-PBS was HRP conjugated as the detection antibody. Range: 78.1-5000 pg/mL



The mean SPIN1 concentration was determined to be 23.1 ng/mL in HeLa cell extract based on a 1.2 mg/mL extract load.



Cytometric bead array standard curve of MP02730-1, SPIN1 Recombinant Matched Antibody Pair, PBS Only. Capture antibody: 86848-3-PBS. Detection antibody: 86848-2-PBS. Standard: Ag2750. Range: 0.469-60 ng/mL