

For Research Use Only

# SPIN1 Recombinant monoclonal antibody

Catalog Number: 86848-3-RR



## Basic Information

|  |  |   |
|--|--|---|
| <b>Catalog Number:</b><br>86848-3-RR                           | <b>GenBank Accession Number:</b><br>BC013571 | <b>Purification Method:</b><br>Protein A purification |
| <b>Size:</b><br>100ul , Concentration: 1000 µg/ml by Nanodrop; | <b>GeneID (NCBI):</b><br>10927               | <b>CloneNo.:</b><br>251836E2                          |
| <b>Source:</b><br>Rabbit                                       | <b>UNIPROT ID:</b><br>Q9Y657                 | <b>Recommended Dilutions:</b><br>WB: 1:2000-1:10000   |
| <b>Isotype:</b><br>IgG   | <b>Full Name:</b><br>spindlin 1              |   |
| <b>Immunogen Catalog Number:</b><br>AG2750                     | <b>Calculated MW:</b><br>262 aa, 30 kDa      |   |
|  | <b>Observed MW:</b><br>30 kDa                |   |

## Applications

|  |  |
|--|--|
| <b>Tested Applications:</b><br>WB, ELISA         | <b>Positive Controls:</b><br>WB : HeLa cells, PC-3 cells, mouse brain tissue, rat brain tissue, Jurkat cells |
| <b>Species Specificity:</b><br>human, mouse, rat |  |

## Background Information

SPIN1 (Spindlin 1) is a histone methylation reader, which recognizes trimethylated histone H3 lysine 4 through the protein-protein interaction. SPIN1 was initially found in ovarian cancer via searching ovarian cancer-related genes. It is overexpressed in ovarian cancer tissue, which exhibits a high homology to mouse Spin (Spindlin) gene. Signaling pathways responsible for SPIN1 functions include PI3K/Akt, Wnt and RET that are highly relevant to tumorigenesis. (PMID: 34492335, PMID: 31790762)

## Storage

**Storage:**  
Store at -20°C. Stable for one year after shipment.  
**Storage Buffer:**  
PBS with 0.02% sodium azide and 50% glycerol, pH7.3  
Aliquoting is unnecessary for -20°C storage

\*\*\* 20ul sizes contain 0.1% BSA

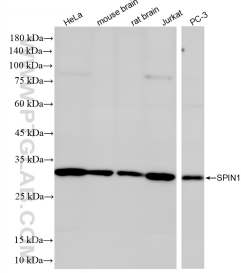
For technical support and original validation data for this product please contact:

T: 1 (888) 4PTGLAB (1-888-478-4522) (toll free in USA), or 1(312) 455-8498 (outside USA)

E: [proteintech@ptglab.com](mailto:proteintech@ptglab.com)  
W: [ptglab.com](http://ptglab.com)

This product is exclusively available under Proteintech Group brand and is not available to purchase from any other manufacturer.

## Selected Validation Data



Various lysates were subjected to SDS PAGE followed by western blot with 86848-3-RR (SPIN1 antibody) at dilution of 1:5000 incubated at room temperature for 1.5 hours.