

For Research Use Only

REEP5 Recombinant monoclonal antibody, PBS Only

Catalog Number: 86849-1-PBS



Basic Information

Catalog Number: 86849-1-PBS	GenBank Accession Number: BC065926	Purification Method: Protein A purification
Size: 100ug, Concentration: 1 mg/ml by Nanodrop;	GeneID (NCBI): 7905	CloneNo.: 251882F7
Source: Rabbit	UNIPROT ID: Q00765	
Isotype: IgG	Full Name: receptor accessory protein 5	
Immunogen Catalog Number: AG6229	Calculated MW: 21 kDa	
	Observed MW: 17 kDa	

Applications

Tested Applications:
WB, IF/ICC, Indirect ELISA

Species Specificity:
human, mouse, rat

Background Information

REEP5 (receptor expression-enhancing protein 5), also named as C5orf18, DP1 or TB2, is a membrane protein belonging to DP1/Yop1p protein family. All REEP proteins contain a conserved TB2/DP1, HVA22 domain which is involved in intracellular trafficking and secretion (PMID: 19123125). REEP5 is expressed in circumvallate papillae and testis, and may have the function to influence functional cell surface expression of taste receptors (PMID: 16720576). REEP5 can interact with atlastins (ATL1 and ATL2) which are involved in modulating the structure of ER network (PMID: 19665976).

Storage

Storage:
Store at -80°C.

Storage Buffer:
PBS only, pH7.3

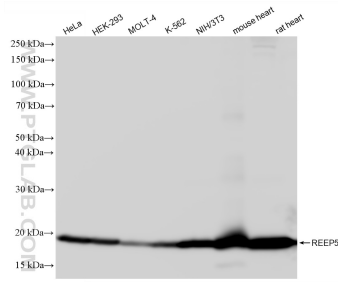
For technical support and original validation data for this product please contact:

T: 1 (888) 4PTGLAB (1-888-478-4522) (toll free in USA), or 1(312) 455-8498 (outside USA)

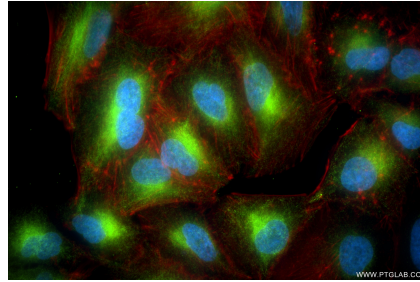
E: proteintech@ptglab.com
W: ptglab.com

This product is exclusively available under Proteintech Group brand and is not available to purchase from any other manufacturer.

Selected Validation Data



Various lysates were subjected to SDS PAGE followed by western blot with 86849-1-RR (REEP5 antibody) at dilution of 1:10000 incubated at room temperature for 1.5 hours. This data was developed using the same antibody clone with 86849-1-PBS in a different storage buffer formulation.



Immunofluorescent analysis of (4% PFA) fixed A549 cells using REEP5 antibody (86849-1-RR, Clone: 251882F7) at dilution of 1:800 and CoraLite® 488-Conjugated Goat Anti-Rabbit IgG(H+L) (SA00013-2), CL594-Phalloidin (red). This data was developed using the same antibody clone with 86849-1-PBS in a different storage buffer formulation.