

For Research Use Only

POLA2 Recombinant monoclonal antibody

Catalog Number: 86856-1-RR



Basic Information

Catalog Number: 86856-1-RR	GenBank Accession Number: BC001347	Purification Method: Protein A purification
Size: 100ul , Concentration: 1000 µg/ml by Nanodrop;	GeneID (NCBI): 23649	CloneNo.: 251924A2
Source: Rabbit	UNIPROT ID: Q14181	Recommended Dilutions: WB: 1:5000-1:50000
Isotype: IgG	Full Name: polymerase (DNA directed), alpha 2 (70kD subunit)	
Immunogen Catalog Number: AG0271	Calculated MW: 70 kDa	
	Observed MW: 68-70 kDa	

Applications

Tested Applications:
WB, ELISA

Species Specificity:
human, mouse, rat

Positive Controls:

WB : HepG2 cells, HeLa cells, COLO 320 cells, MCF-7 cells, NIH/3T3 cells, RAW 264.7 cells, PC-12 cells

Storage

Storage:
Store at -20°C. Stable for one year after shipment.

Storage Buffer:
PBS with 0.02% sodium azide and 50% glycerol, pH7.3

Aliquoting is unnecessary for -20°C storage

*** 20ul sizes contain 0.1% BSA

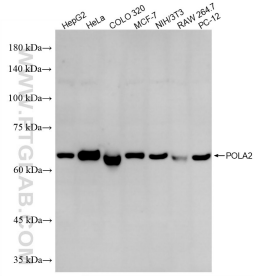
For technical support and original validation data for this product please contact:

T: 1 (888) 4PTGLAB (1-888-478-4522) (toll free in USA), or 1(312) 455-8498 (outside USA)

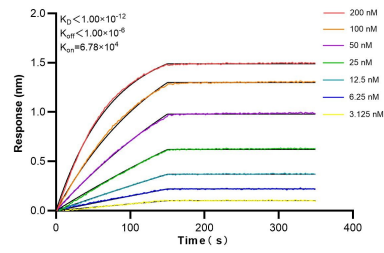
E: proteintech@ptglab.com
W: ptglab.com

This product is exclusively available under Proteintech Group brand and is not available to purchase from any other manufacturer.

Selected Validation Data



Various lysates were subjected to SDS PAGE followed by western blot with 86856-1-RR (POLA2 antibody) at dilution of 1:10000 incubated at room temperature for 1.5 hours.



Biolayer interferometry (BLI) kinetic assays of 86856-1-RR against Human POLA2 were performed. The affinity constant is below 1 pM.