

For Research Use Only

POLA2 Recombinant monoclonal antibody, PBS Only

Catalog Number:86856-3-PBS



Basic Information

Catalog Number:

86856-3-PBS

Size:

100ug , Concentration: 1 mg/ml by Nanodrop;

Source:

Rabbit

Isotype:

IgG

Immunogen Catalog Number:

AG0271

GenBank Accession Number:

BC001347

GeneID (NCBI):

23649

UNIPROT ID:

Q14181

Full Name:

polymerase (DNA directed), alpha 2 (70kD subunit)

Calculated MW:

70 kDa

Observed MW:

68-70 kDa

Purification Method:

Protein A purification

CloneNo.:

251924F2

Applications

Tested Applications:

WB, Indirect ELISA

Species Specificity:

human

Storage

Storage:

Store at -80°C.

Storage Buffer:

PBS only, pH7.3

For technical support and original validation data for this product please contact:

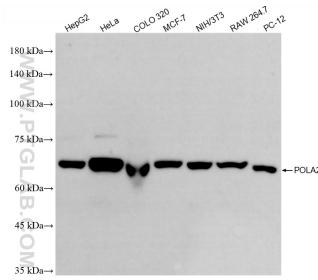
T: 1 (888) 4PTGLAB (1-888-478-4522) (toll free in USA), or 1(312) 455-8498 (outside USA)

E: proteintech@ptglab.com

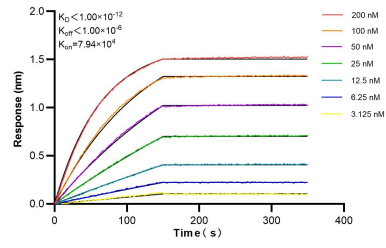
W: ptglab.com

This product is exclusively available under Proteintech Group brand and is not available to purchase from any other manufacturer.

Selected Validation Data



Various lysates were subjected to SDS PAGE followed by western blot with 86856-3-RR (POLA2 antibody) at dilution of 1:10000 incubated at room temperature for 1.5 hours. This data was developed using the same antibody clone with 86856-3-PBS in a different storage buffer formulation.



Biolayer interferometry (BLI) kinetic assays of 86856-3-RR against Human POLA2 were performed. The affinity constant is below 1 pM.