

For Research Use Only

CD158Z/KIR3DL3 Recombinant monoclonal antibody, PBS Only (Detector)

Catalog Number: 86872-1-PBS



Basic Information

Catalog Number: 86872-1-PBS	GenBank Accession Number: /	Purification Method: Protein A purification
Size: 100ug , Concentration: 1 mg/ml by Nanodrop;	GeneID (NCBI): 115653	CloneNo.: 25025483
Source: Rabbit	UNIPROT ID: Q8N743	
Isotype: IgG	Full Name: killer cell immunoglobulin-like receptor, three domains, long cytoplasmic tail, 3	
Immunogen Catalog Number: EG4358	Calculated MW: 45 kDa	

Applications

Tested Applications:
Cytometric bead array, Indirect ELISA

Species Specificity:
human

Product Information

86872-1-PBS targets CD158Z/KIR3DL3 as part of a matched antibody pair:

MP02734-1: 86872-2-PBS capture and 86872-1-PBS detection (validated in Cytometric bead array)

Unconjugated rabbit recombinant monoclonal antibody in PBS only (BSA and azide free) storage buffer at a concentration of 1 mg/mL, ready for conjugation. Created using Proteintech's proprietary in-house recombinant technology. Recombinant production enables unrivalled batch-to-batch consistency, easy scale-up, and future security of supply.

This conjugation ready format makes antibodies ideal for use in many applications including: ELISAs, multiplex assays requiring matched pairs, mass cytometry, and multiplex imaging applications. Antibody use should be optimized by the end user for each application and assay.

Storage

Storage:
Store at -80°C.

Storage Buffer:
PBS only, pH7.3

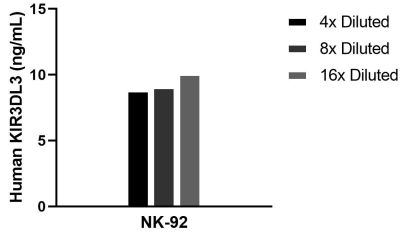
For technical support and original validation data for this product please contact:

T: 1 (888) 4PTGLAB (1-888-478-4522) (toll free in USA), or 1(312) 455-8498 (outside USA)

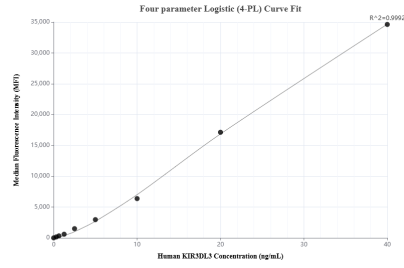
E: proteintech@ptglab.com
W: ptglab.com

This product is exclusively available under Proteintech Group brand and is not available to purchase from any other manufacturer.

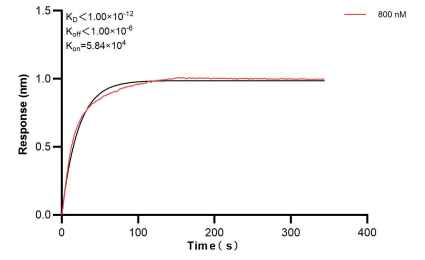
Selected Validation Data



The mean KIR3DL3 concentration was determined to be 9.3 ng/mL in NK-92 cell extract based on a 1.2 mg/mL extract load.



Cytometric bead array standard curve of MP02734-1, KIR3DL3 Recombinant Matched Antibody Pair, PBS Only. Capture antibody: 86872-2-PBS. Detection antibody: 86872-1-PBS. Standard: Eg4358. Range: 0.312-40 ng/mL.



Bi-layer interferometry (BLI) kinetic assay of 86872-1-PBS against Human CD158Z/KIR3DL3 was performed. The affinity constant is below 1 pM.