

For Research Use Only

SESTD1 Recombinant monoclonal antibody, PBS Only (Detector)

Catalog Number:86875-1-PBS



Basic Information

Catalog Number: 86875-1-PBS	GenBank Accession Number: BC047578	Purification Method: Protein A purification
Size: 100ug , Concentration: 1 mg/ml by Nanodrop;	GeneID (NCBI): 91404	CloneNo.: 251894D5
Source: Rabbit	UNIPROT ID: Q86VW0	
Isotype: IgG	Full Name: SEC14 and spectrin domains 1	
Immunogen Catalog Number: AG21016	Calculated MW: 696 aa, 79 kDa	

Applications

Tested Applications:
Cytometric bead array, Indirect ELISA

Species Specificity:
human

Product Information

86875-1-PBS targets SESTD1 as part of a matched antibody pair:

MP02736-1: 86875-2-PBS capture and 86875-1-PBS detection (validated in Cytometric bead array)

Unconjugated rabbit recombinant monoclonal antibody in PBS only (BSA and azide free) storage buffer at a concentration of 1 mg/mL, ready for conjugation. Created using Proteintech's proprietary in-house recombinant technology. Recombinant production enables unrivalled batch-to-batch consistency, easy scale-up, and future security of supply.

This conjugation ready format makes antibodies ideal for use in many applications including: ELISAs, multiplex assays requiring matched pairs, mass cytometry, and multiplex imaging applications. Antibody use should be optimized by the end user for each application and assay.

Storage

Storage:
Store at -80°C.

Storage Buffer:
PBS only, pH7.3

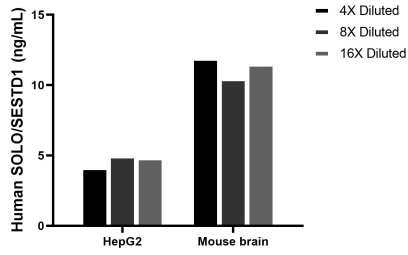
For technical support and original validation data for this product please contact:

T: 1 (888) 4PTGLAB (1-888-478-4522) (toll free in USA), or 1(312) 455-8498 (outside USA)

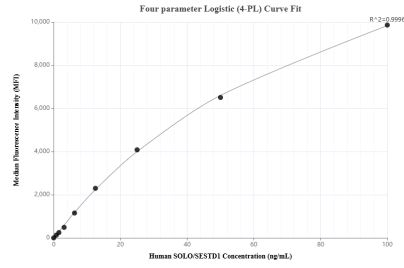
E: proteintech@ptglab.com
W: ptglab.com

This product is exclusively available under Proteintech Group brand and is not available to purchase from any other manufacturer.

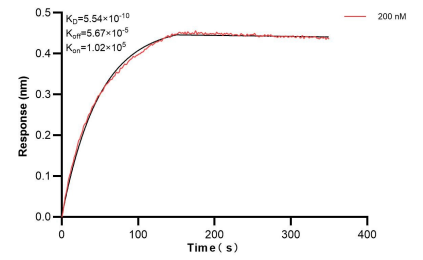
Selected Validation Data



The mean SOLO/SESTD1 concentration was determined to be 4.6 ng/mL in HepG2 cell extract based on a 1.2 mg/mL extract load, 11.3 ng/mL in Mouse brain tissue extract based on a 3.2 mg/mL extract load.



Cytometric bead array standard curve of MP02736-1, SOLO/SESTD1 Recombinant Matched Antibody Pair, PBS Only. Capture antibody: 86875-2-PBS. Detection antibody: 86875-1-PBS. Standard: Ag21016. Range: 0.781-100 ng/mL.



Bi-layer interferometry (BLI) kinetic assay of 86875-1-PBS against Human SESTD1 was performed. The affinity constant is 0.554 nM.