

For Research Use Only

SOLO/SESTD1 Recombinant monoclonal antibody, PBS Only (Capture)

Catalog Number: 86875-2-PBS



Basic Information

Catalog Number: 86875-2-PBS	GenBank Accession Number: BC047578	Purification Method: Protein A purification
Size: 100ug, Concentration: 1 mg/ml by Nanodrop;	GeneID (NCBI): 91404	CloneNo.: 251894E9
Source: Rabbit	UNIPROT ID: Q86VW0	
Isotype: IgG	Full Name: SEC14 and spectrin domains 1	
Immunogen Catalog Number: AG21016	Calculated MW: 696 aa, 79 kDa	
	Observed MW: 79 kDa	

Applications

Tested Applications:
WB, IF/ICC, Cytometric bead array, Indirect ELISA

Species Specificity:
human, mouse, rat

Product Information

86875-2-PBS targets SOLO/SESTD1 as part of a matched antibody pair:

MP02736-1: 86875-2-PBS capture and 86875-1-PBS detection (validated in Cytometric bead array)

Unconjugated rabbit recombinant monoclonal antibody in PBS only (BSA and azide free) storage buffer at a concentration of 1 mg/mL, ready for conjugation. Created using Proteintech's proprietary in-house recombinant technology. Recombinant production enables unrivalled batch-to-batch consistency, easy scale-up, and future security of supply.

This conjugation ready format makes antibodies ideal for use in many applications including: ELISAs, multiplex assays requiring matched pairs, mass cytometry, and multiplex imaging applications. Antibody use should be optimized by the end user for each application and assay.

Background Information

SEC14 domain and spectrin repeat-containing protein 1 (SESTD1) is also named Huntingtin-interacting protein-like protein and SOLO. SESTD1, a previously uncharacterized lipid-binding protein strongly expressed in aorta, was found to interact with both TRPC proteins and modulate receptor-activated TRPC5 currents in a recombinant cell line (PMID: 20164195). SESTD1 is proposed to be involved in phospholipid regulation of transient receptor potential channels TRPC4 and TRPC5 (PMID: 26503763). SESTD1 expression is associated with high abundance of immune infiltration, including T helper cells, Th2 cells, and Macrophages in HCC (PMID: 41016345).

Storage

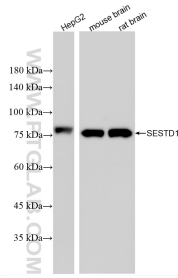
Storage:
Store at -80°C.

Storage Buffer:
PBS only, pH7.3

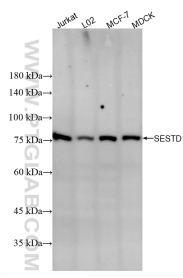
For technical support and original validation data for this product please contact:
T: 1 (888) 4PTGLAB (1-888-478-4522) (toll free in USA), or 1(312) 455-8498 (outside USA) E: proteintech@ptglab.com
W: ptglab.com

This product is exclusively available under Proteintech Group brand and is not available to purchase from any other manufacturer.

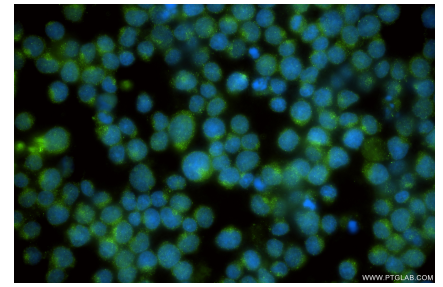
Selected Validation Data



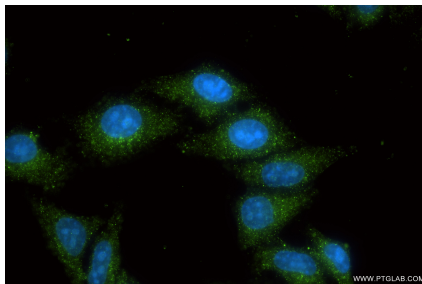
Various lysates were subjected to SDS PAGE followed by western blot with 86875-2-RR (SESTD1 antibody) at dilution of 1:10000 incubated at room temperature for 1.5 hours. This data was developed using the same antibody clone with 86875-2-PBS in a different storage buffer formulation.



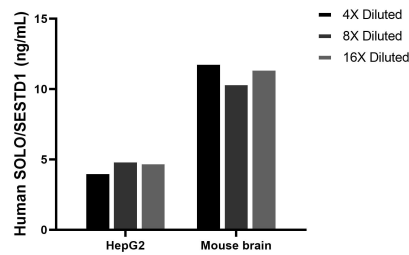
Various lysates were subjected to SDS PAGE followed by western blot with 86875-2-RR (SESTD1 antibody) at dilution of 1:10000 incubated at room temperature for 1.5 hours. This data was developed using the same antibody clone with 86875-2-PBS in a different storage buffer formulation.



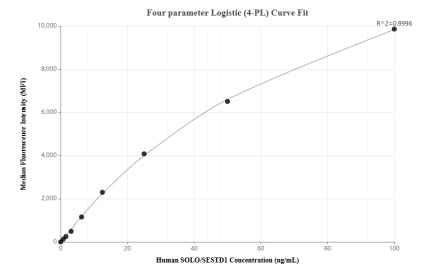
Immunofluorescent analysis of (4% PFA) fixed Jurkat cells using SESTD1 antibody (86875-2-RR, Clone: 251894E9) at dilution of 1:200 and CoraLite@488-Conjugated Goat Anti-Rabbit IgG(H+L) (SA00013-2). This data was developed using the same antibody clone with 86875-2-PBS in a different storage buffer formulation.



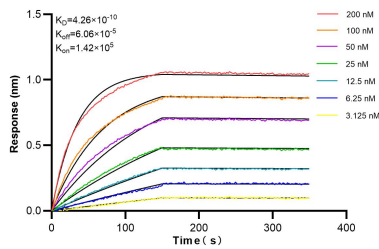
Immunofluorescent analysis of (-20°C Ethanol) fixed HepG2 cells using SESTD1 antibody (86875-2-RR, Clone: 251894E9) at dilution of 1:200 and CoraLite@488-Conjugated Goat Anti-Rabbit IgG(H+L) (SA00013-2). This data was developed using the same antibody clone with 86875-2-PBS in a different storage buffer formulation.



The mean SOLO/SESTD1 concentration was determined to be 4.6 ng/mL in HepG2 cell extract based on a 1.2 mg/mL extract load, 11.3 ng/mL in Mouse brain tissue extract based on a 3.2 mg/mL extract load.



Cytometric bead array standard curve of MP02736-1, SOLO/SESTD1 Recombinant Matched Antibody Pair, PBS Only. Capture antibody: 86875-2-PBS. Detection antibody: 86875-1-PBS. Standard: Ag21016. Range: 0.781-100 ng/mL



Biolayer interferometry (BLI) kinetic assays of 86875-2-RR against Human SOLO/SESTD1 were performed. The affinity constant is 0.426 nM.