

For Research Use Only

# SOLO/SESTD1 Recombinant monoclonal antibody

Catalog Number:86875-2-RR



## Basic Information

<b>Catalog Number:</b> 86875-2-RR	<b>GenBank Accession Number:</b> BC047578	<b>Purification Method:</b> Protein A purification
<b>Size:</b> 100ul , Concentration: 1000 µg/ml by Nanodrop;	<b>GeneID (NCBI):</b> 91404	<b>CloneNo.:</b> 251894E9
<b>Source:</b> Rabbit	<b>UNIPROT ID:</b> Q86VW0	<b>Recommended Dilutions:</b> WB: 1:5000-1:50000 IF/ICC: 1:50-1:500
<b>Isotype:</b> IgG	<b>Full Name:</b> SEC14 and spectrin domains 1	
<b>Immunogen Catalog Number:</b> AG21016	<b>Calculated MW:</b> 696 aa, 79 kDa	
	<b>Observed MW:</b> 79 kDa	

## Applications

<b>Tested Applications:</b> WB, IF/ICC, ELISA	<b>Positive Controls:</b>
<b>Species Specificity:</b> human, mouse, rat	<b>WB :</b> HepG2 cells, Jurkat cells, mouse brain tissue, rat brain tissue, L02 cells, MCF-7 cells, MDCK cells
	<b>IF/ICC :</b> Jurkat cells, HepG2 cells

## Background Information

SEC14 domain and spectrin repeat-containing protein 1 (SESTD1) is also named Huntingtin-interacting protein-like protein and SOLO. SESTD1, a previously uncharacterized lipid-binding protein strongly expressed in aorta, was found to interact with both TRPC proteins and modulate receptor-activated TRPC5 currents in a recombinant cell line (PMID: 20164195). SESTD1 is proposed to be involved in phospholipid regulation of transient receptor potential channels TRPC4 and TRPC5 (PMID: 26503763). SESTD1 expression is associated with high abundance of immune infiltration, including T helper cells, Th2 cells, and Macrophages in HCC (PMID: 41016345).

## Storage

**Storage:**  
Store at -20°C. Stable for one year after shipment.  
**Storage Buffer:**  
PBS with 0.02% sodium azide and 50% glycerol, pH7.3  
**Aliquoting is unnecessary for -20°C storage**

\*\*\* 20ul sizes contain 0.1% BSA

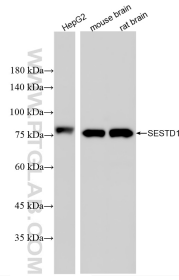
For technical support and original validation data for this product please contact:

T: 1 (888) 4PTGLAB (1-888-478-4522) (toll free in USA), or 1(312) 455-8498 (outside USA)

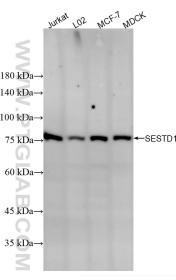
E: [proteintech@ptglab.com](mailto:proteintech@ptglab.com)  
W: [ptglab.com](http://ptglab.com)

**This product is exclusively available under Proteintech Group brand and is not available to purchase from any other manufacturer.**

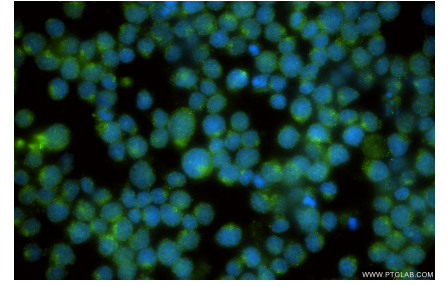
## Selected Validation Data



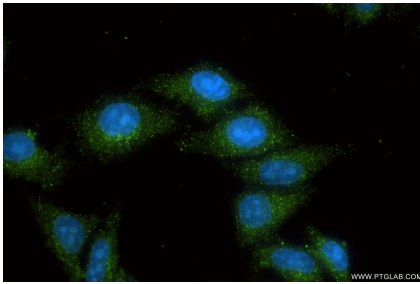
Various lysates were subjected to SDS PAGE followed by western blot with 86875-2-RR (SESTD1 antibody) at dilution of 1:10000 incubated at room temperature for 1.5 hours.



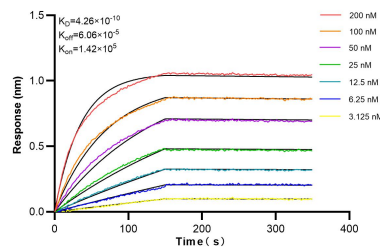
Various lysates were subjected to SDS PAGE followed by western blot with 86875-2-RR (SESTD1 antibody) at dilution of 1:10000 incubated at room temperature for 1.5 hours.



Immunofluorescent analysis of (4% PFA) fixed Jurkat cells using SESTD1 antibody (86875-2-RR, Clone: 251894E9) at dilution of 1:200 and CoraLite®488-Conjugated Goat Anti-Rabbit IgG(H+L) (SA00013-2).



Immunofluorescent analysis of (-20°C Ethanol) fixed HepG2 cells using SESTD1 antibody (86875-2-RR, Clone: 251894E9) at dilution of 1:200 and CoraLite®488-Conjugated Goat Anti-Rabbit IgG(H+L) (SA00013-2).



Biolayer interferometry (BLI) kinetic assays of 86875-2-RR against Human SOLO/SESTD1 were performed. The affinity constant is 0.426 nM.