

For Research Use Only

# GLYR1 Recombinant monoclonal antibody

Catalog Number: 86877-1-RR



## Basic Information

<b>Catalog Number:</b> 86877-1-RR	<b>GenBank Accession Number:</b> BC064940	<b>Purification Method:</b> Protein A purification
<b>Size:</b> 100ul , Concentration: 1000 µg/ml by Nanodrop;	<b>GeneID (NCBI):</b> 84656	<b>CloneNo.:</b> 251890G7
<b>Source:</b> Rabbit	<b>UNIPROT ID:</b> Q49A26	<b>Recommended Dilutions:</b> WB: 1:5000-1:50000 IF/ICC: 1:500-1:2000
<b>Isotype:</b> IgG	<b>Full Name:</b> cytokine-like nuclear factor n-pac	
<b>Immunogen Catalog Number:</b> AG6637	<b>Calculated MW:</b> 61 kDa	
	<b>Observed MW:</b> 60 kDa	

## Applications

**Tested Applications:**  
WB, IF/ICC, ELISA

**Species Specificity:**  
human, rat

### Positive Controls:

**WB :** HeLa cells, HEK-293 cells, HepG2 cells, Jurkat cells, K-562 cells, HSC-T6 cells

**IF/ICC :** HeLa cells,

## Background Information

GlyR1 (glyoxylate/succinate semi-Aldehyde Reductase 1) is a plant-specific NADPH- dependent reductase, which mainly locates in cytoplasm. It was originally regarded as "glyoxal/succinate semialdehyde reductase", which can reduce glyoxylate, an intermediate product of photorespiration, to glycolate, and also reduce succinate semialdehyde produced by GABA metabolism to  $\gamma$ -hydroxybutyric acid, thus eliminating active aldehydes and alleviating oxidative damage caused by abiotic stress. In invasive breast cancer cells, GLYR1 was detected to "flip" from the nucleus to the cell membrane (ecto-GLYR1) and became a new tumor-specific antigen. Humanized antibody and CAR-NK/CAR-T systems have been established for the membrane epitope, and will soon enter the clinical safety assessment. This means that GLYR1 itself can also be used as a "membrane target antigen" for precise tumor treatment.

## Storage

**Storage:**  
Store at -20°C. Stable for one year after shipment.

**Storage Buffer:**  
PBS with 0.02% sodium azide and 50% glycerol, pH7.3

**Aliquoting is unnecessary for -20°C storage**

\*\*\* 20ul sizes contain 0.1% BSA

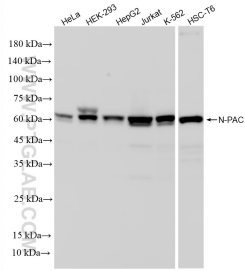
For technical support and original validation data for this product please contact:

T: 1 (888) 4PTGLAB (1-888-478-4522) (toll free in USA), or 1(312) 455-8498 (outside USA)

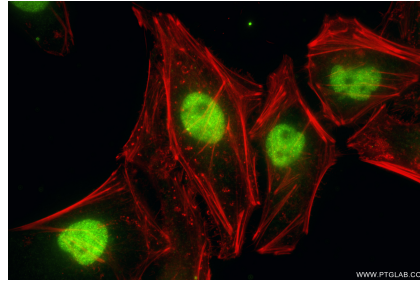
E: [proteintech@ptglab.com](mailto:proteintech@ptglab.com)  
W: [ptglab.com](http://ptglab.com)

**This product is exclusively available under Proteintech Group brand and is not available to purchase from any other manufacturer.**

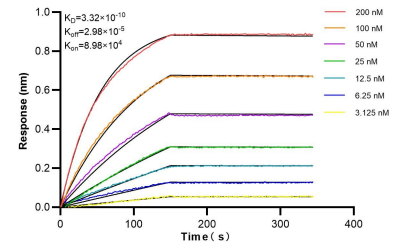
## Selected Validation Data



Various lysates were subjected to SDS PAGE followed by western blot with 86877-1-RR (N-PAC antibody) at dilution of 1:20000 incubated at room temperature for 1.5 hours.



Immunofluorescent analysis of (4% PFA) fixed HeLa cells using N-PAC antibody (86877-1-RR, Clone: 251890G7) at dilution of 1:1000 and CoraLite® 488-Conjugated Goat Anti-Rabbit IgG(H+L) (SA00013-2), CL594-Phalloidin (red).



Biolayer interferometry (BLI) kinetic assays of 86877-1-RR against Human GLYR1 were performed. The affinity constant is 0.332 nM.