

Laminin beta 1 Recombinant monoclonal antibody, PBS Only (Capture)

Catalog Number: 86881-1-PBS

Basic Information

Catalog Number: 86881-1-PBS	GenBank Accession Number: BC113455	Purification Method: Protein A purification
Size: 100ug, Concentration: 1 mg/ml by Nanodrop;	GeneID (NCBI): 3912	CloneNo.: 251869B1
Source: Rabbit	UNIPROT ID: P07942	
Isotype: IgG	Full Name: laminin, beta 1	
Immunogen Catalog Number: AG19182	Calculated MW: 1786 aa, 198 kDa	
	Observed MW: 220 kDa	

Applications

Tested Applications:
WB, Sandwich ELISA, Indirect ELISA

Species Specificity:
human, mouse

Product Information

86881-1-PBS targets Laminin beta 1 as part of a matched antibody pair:

MP02972-1: 86881-1-PBS capture and 86881-2-PBS detection (validated in Sandwich ELISA)

Unconjugated rabbit recombinant monoclonal antibody in PBS only (BSA and azide free) storage buffer at a concentration of 1 mg/mL, ready for conjugation. Created using Proteintech's proprietary in-house recombinant technology. Recombinant production enables unrivalled batch-to-batch consistency, easy scale-up, and future security of supply.

This conjugation ready format makes antibodies ideal for use in many applications including: ELISAs, multiplex assays requiring matched pairs, mass cytometry, and multiplex imaging applications. Antibody use should be optimized by the end user for each application and assay.

Background Information

Laminins are a family of basement membrane glycoproteins composed of three nonidentical chains, laminin alpha, beta and gamma (formerly A, B1, and B2, respectively) (PMID: 7959779). Laminins contribute to the structure of extracellular matrix and influence the behavior of associated cells, such as adhesion, differentiation, migration, phenotype stability, and resistance to anoikis (PMID: 23057746). Laminin beta 1 (LAMB1) is expressed in most tissues that produce basement membranes, and is one of the 3 chains constituting laminin-1, the first laminin isolated from Engelbreth-Holm-Swarm (EHS) tumor. Laminin beta 1 is also a subunit of laminin-2 (laminin-211 or merosin), laminin-6 (laminin-311 or K-laminin), laminin-8 (laminin-411), laminin-10 (laminin-511) and laminin-12 (laminin-213).

Storage

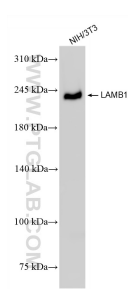
Storage:
Store at -80°C.

Storage Buffer:
PBS only, pH7.3

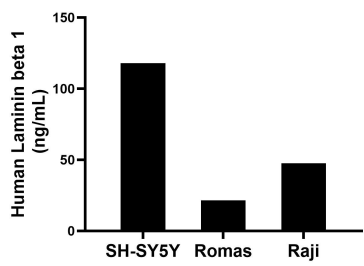
For technical support and original validation data for this product please contact:
T: 1 (888) 4PTGLAB (1-888-478-4522) (toll free in USA), or 1(312) 455-8498 (outside USA)
E: proteintech@ptglab.com
W: ptglab.com

This product is exclusively available under Proteintech Group brand and is not available to purchase from any other manufacturer.

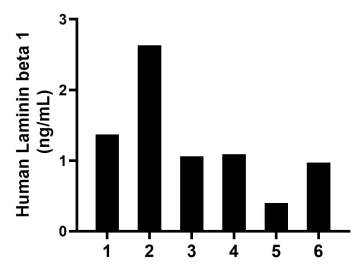
Selected Validation Data



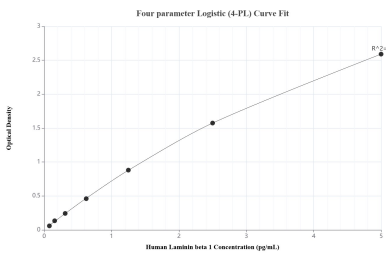
NIH/3T3 cells were subjected to SDS PAGE followed by western blot with 86881-1-RR (LAMB1 antibody) at dilution of 1:10000 incubated at room temperature for 1.5 hours. This data was developed using the same antibody clone with 86881-1-PBS in a different storage buffer formulation.



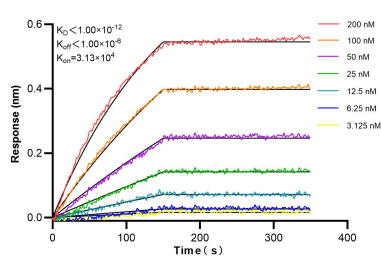
The mean Laminin beta 1 concentration was determined to be 118.0 ng/mL in SH-SY5Y cell extract based on a 1.2 mg/mL extract load, 21.5 ng/mL in Ramos cell extract based on a 2.3 mg/mL extract load and 47.6 ng/mL in Raji cell extract based on a 1.5 mg/mL extract load.



Serum of six individual healthy human donors was measured. The Laminin beta 1 concentration of detected samples was determined to be 1.3 ng/mL with a range of 0.4-2.6 ng/mL.



Sandwich ELISA standard curve of MP02972-1, Human Laminin beta 1 Recombinant Matched Antibody Pair - PBS only. 86881-1-PBS was coated to a plate as the capture antibody and incubated with serial dilutions of standard Ag19182. 86881-2-PBS was HRP conjugated as the detection antibody. Range: 78.1-5000 pg/mL.



Biolayer interferometry (BLI) kinetic assays of 86881-1-RR against Human Laminin beta 1 were performed. The affinity constant is below 1 pM.