

For Research Use Only

Laminin beta 1 Recombinant monoclonal antibody

Catalog Number: 86881-1-RR



Basic Information

Catalog Number:	86881-1-RR	GenBank Accession Number:	BC113455	Purification Method:	Protein A purification
Size:	100ul , Concentration: 1000 µg/ml by Nanodrop;	GeneID (NCBI):	3912	CloneNo.:	251869B1
Source:	Rabbit	UNIPROT ID:	P07942	Recommended Dilutions:	WB: 1:5000-1:50000
Isotype:	IgG	Full Name:	laminin, beta 1		
Immunogen Catalog Number:	AG19182	Calculated MW:	1786 aa, 198 kDa		
		Observed MW:	220 kDa		

Applications

Tested Applications:	WB, ELISA	Positive Controls:	WB : NIH/3T3 cells,
Species Specificity:	human, mouse		

Background Information

Laminins are a family of basement membrane glycoproteins composed of three nonidentical chains, laminin alpha, beta and gamma (formerly A, B1, and B2, respectively) (PMID: 7959779). Laminins contribute to the structure of extracellular matrix and influence the behavior of associated cells, such as adhesion, differentiation, migration, phenotype stability, and resistance to anoikis (PMID: 23057746). Laminin beta 1 (LAMB1) is expressed in most tissues that produce basement membranes, and is one of the 3 chains constituting laminin-1, the first laminin isolated from Engelbreth-Holm-Swarm (EHS) tumor. Laminin beta 1 is also a subunit of laminin-2 (laminin-211 or merosin), laminin-6 (laminin-311 or K-laminin), laminin-8 (laminin-411), laminin-10 (laminin-511) and laminin-12 (laminin-213).

Storage

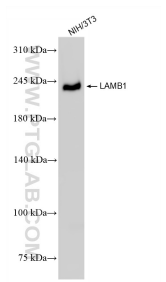
Storage:
Store at -20°C. Stable for one year after shipment.
Storage Buffer:
PBS with 0.02% sodium azide and 50% glycerol, pH7.3
Aliquoting is unnecessary for -20°C storage

*** 20ul sizes contain 0.1% BSA

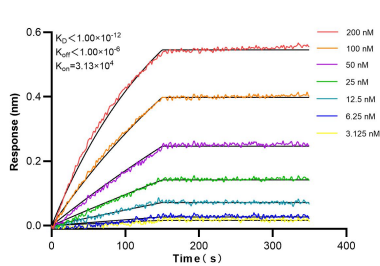
For technical support and original validation data for this product please contact:
T: 1 (888) 4PTGLAB (1-888-478-4522) (toll free in USA), or 1(312) 455-8498 (outside USA)
E: proteintech@ptglab.com
W: ptglab.com

This product is exclusively available under Proteintech Group brand and is not available to purchase from any other manufacturer.

Selected Validation Data



NIH/3T3 cells were subjected to SDS PAGE followed by western blot with 86881-1-RR (LAMB1 antibody) at dilution of 1:10000 incubated at room temperature for 1.5 hours.



Biolayer interferometry (BLI) kinetic assays of 86881-1-RR against Human Laminin beta 1 were performed. The affinity constant is below 1 pM.