

For Research Use Only

CCDC28A Recombinant monoclonal antibody, PBS Only (Detector)

Catalog Number: 86883-1-PBS



Basic Information

Catalog Number: 86883-1-PBS	GenBank Accession Number: BC000758	Purification Method: Protein A purification
Size: 100ug, Concentration: 1 mg/ml by Nanodrop;	GeneID (NCBI): 25901	CloneNo.: 251922E2
Source: Rabbit	UNIPROT ID: Q8IWP9	
Isotype: IgG	Full Name: coiled-coil domain containing 28A	
Immunogen Catalog Number: AG6529	Calculated MW: 30 kDa	
	Observed MW: 25 kDa	

Applications

Tested Applications:
WB, IHC, IF/ICC, Cytometric bead array, Indirect ELISA

Species Specificity:
human, mouse, rat

Product Information

86883-1-PBS targets CCDC28A as part of a matched antibody pair:

MP02764-1: 86883-2-PBS capture and 86883-1-PBS detection (validated in Cytometric bead array)

Unconjugated rabbit recombinant monoclonal antibody in PBS only (BSA and azide free) storage buffer at a concentration of 1 mg/mL, ready for conjugation. Created using Proteintech's proprietary in-house recombinant technology. Recombinant production enables unrivalled batch-to-batch consistency, easy scale-up, and future security of supply.

This conjugation ready format makes antibodies ideal for use in many applications including: ELISAs, multiplex assays requiring matched pairs, mass cytometry, and multiplex imaging applications. Antibody use should be optimized by the end user for each application and assay.

Background Information

Coiled-coil domain-containing protein 28A (CCDC28A) is a translocation partner of nucleoporin 98 (NUP98) in acute leukemias, resulting in the creation of fusion genes and the expression of chimeric proteins. These fusion proteins, such as NUP98-CCDC28A, have been shown to promote myeloproliferative neoplasms (PMID: 22058212). Additionally, CCDC28A is essential for head-tail coupling stability, thereby ensuring sperm motility (PMID: 39500989).

Storage

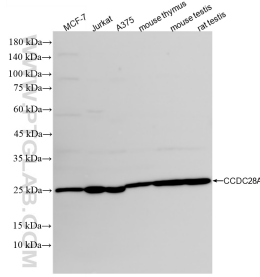
Storage:
Store at -80°C.

Storage Buffer:
PBS only, pH7.3

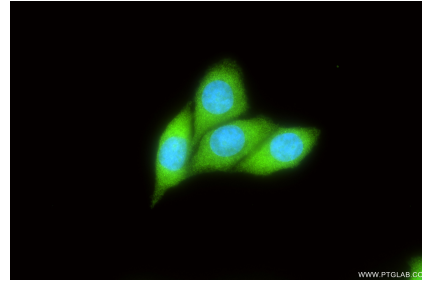
For technical support and original validation data for this product please contact:
T: 1 (888) 4PTGLAB (1-888-478-4522) (toll free in USA), or 1(312) 455-8498 (outside USA)
E: proteintech@ptglab.com
W: ptglab.com

This product is exclusively available under Proteintech Group brand and is not available to purchase from any other manufacturer.

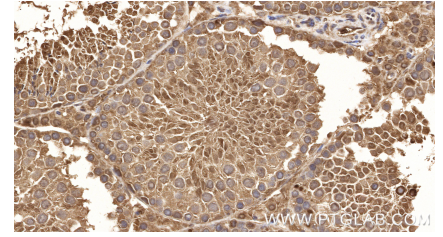
Selected Validation Data



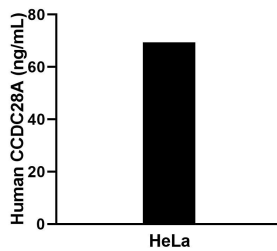
Various lysates were subjected to SDS PAGE followed by western blot with 86883-1-RR (CCDC28A antibody) at dilution of 1:5000 incubated at room temperature for 1.5 hours. This data was developed using the same antibody clone with 86883-1-PBS in a different storage buffer formulation.



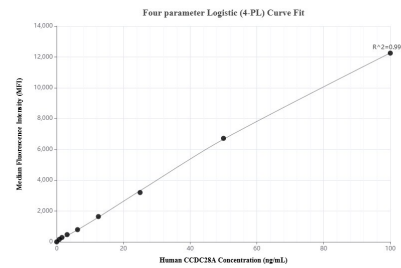
Immunofluorescent analysis of (4% PFA) fixed MCF-7 cells using CCDC28A antibody (86883-1-RR, Clone: 251922E2) at dilution of 1:200 and CoraLite® 488-Conjugated Goat Anti-Rabbit IgG(H+L) (SA00013-2). This data was developed using the same antibody clone with 86883-1-PBS in a different storage buffer formulation.



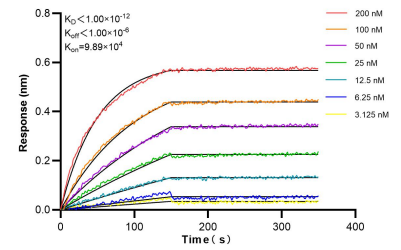
Immunohistochemical analysis of paraffin-embedded mouse testis tissue slide using 86883-1-RR (CCDC28A antibody) at dilution of 1:400 (under 40x lens). Heat mediated antigen retrieval with Tris-EDTA buffer (pH 9.0). This data was developed using the same antibody clone with 86883-1-PBS in a different storage buffer formulation.



The mean CCDC28A concentration was determined to be 70.2 ng/mL in HeLa cell extract based on a 1.2 mg/mL extract load.



Cytometric bead array standard curve of MP02764-1, CCDC28A Recombinant Matched Antibody Pair, PBS Only. Capture antibody: 86883-2-PBS. Detection antibody: 86883-1-PBS. Standard: Ag6529. Range: 0.781-100 ng/mL.



Bi-layer interferometry (BLI) kinetic assays of 86883-1-RR against Human CCDC28A were performed. The affinity constant is below 1 pM.