

For Research Use Only

# CCDC28A Recombinant monoclonal antibody

Catalog Number: 86883-1-RR



## Basic Information

<b>Catalog Number:</b> 86883-1-RR	<b>GenBank Accession Number:</b> BC000758	<b>Purification Method:</b> Protein A purification
<b>Size:</b> 100ul , Concentration: 1000 µg/ml by Nanodrop;	<b>GeneID (NCBI):</b> 25901	<b>CloneNo.:</b> 251922E2
<b>Source:</b> Rabbit	<b>UNIPROT ID:</b> Q8IWP9	<b>Recommended Dilutions:</b> WB: 1:2000-1:10000 IHC: 1:200-1:800 IF/ICC: 1:50-1:500
<b>Isotype:</b> IgG	<b>Full Name:</b> coiled-coil domain containing 28A	
<b>Immunogen Catalog Number:</b> AG6529	<b>Calculated MW:</b> 30 kDa	
	<b>Observed MW:</b> 25 kDa	

## Applications

**Tested Applications:**  
WB, IHC, IF/ICC, ELISA

**Species Specificity:**  
human, mouse, rat

**Note-IHC: suggested antigen retrieval with TE buffer pH 9.0; (\*) Alternatively, antigen retrieval may be performed with citrate buffer pH 6.0**

**Positive Controls:**

**WB :** MCF-7 cells, Jurkat cells, A375 cells, mouse thymus tissue, mouse testis tissue, rat testis tissue

**IHC :** mouse testis tissue,

**IF/ICC :** MCF-7 cells,

## Background Information

Coiled-coil domain-containing protein 28A (CCDC28A) is a translocation partner of nucleoporin 98 (NUP98) in acute leukemias, resulting in the creation of fusion genes and the expression of chimeric proteins. These fusion proteins, such as NUP98-CCDC28A, have been shown to promote myeloproliferative neoplasms (PMID: 22058212). Additionally, CCDC28A is essential for head-tail coupling stability, thereby ensuring sperm motility (PMID: 39500989).

## Storage

**Storage:**

Store at -20°C. Stable for one year after shipment.

**Storage Buffer:**

PBS with 0.02% sodium azide and 50% glycerol, pH7.3

Aliquoting is unnecessary for -20°C storage

**\*\*\* 20ul sizes contain 0.1% BSA**

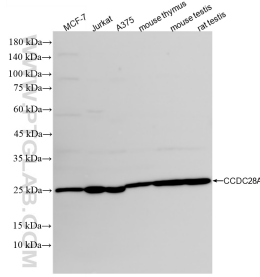
For technical support and original validation data for this product please contact:

T: 1 (888) 4PTGLAB (1-888-478-4522) (toll free in USA), or 1(312) 455-8498 (outside USA)

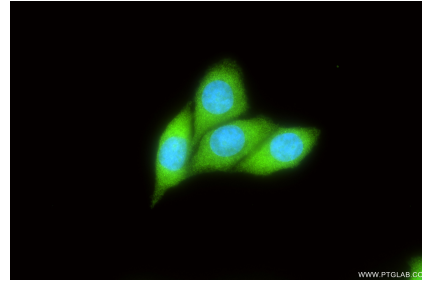
E: [proteintech@ptglab.com](mailto:proteintech@ptglab.com)  
W: [ptglab.com](http://ptglab.com)

**This product is exclusively available under Proteintech Group brand and is not available to purchase from any other manufacturer.**

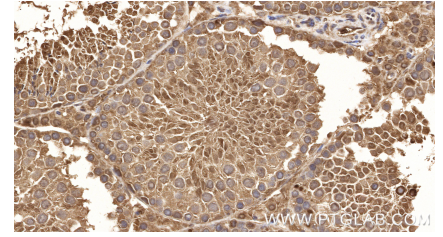
## Selected Validation Data



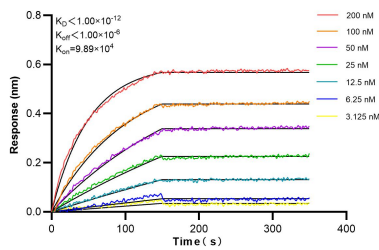
Various lysates were subjected to SDS PAGE followed by western blot with 86883-1-RR (CCDC28A antibody) at dilution of 1:5000 incubated at room temperature for 1.5 hours.



Immunofluorescent analysis of (4% PFA) fixed MCF-7 cells using CCDC28A antibody (86883-1-RR, Clone: 251922E2) at dilution of 1:200 and CoraLite® 488-Conjugated Goat Anti-Rabbit IgG(H+L) (SA00013-2).



Immunohistochemical analysis of paraffin-embedded mouse testis tissue slide using 86883-1-RR (CCDC28A antibody) at dilution of 1:400 (under 40x lens). Heat mediated antigen retrieval with Tris-EDTA buffer (pH 9.0).



Biolayer interferometry (BLI) kinetic assays of 86883-1-RR against Human CCDC28A were performed. The affinity constant is below 1 pM.