

For Research Use Only

# Mouse Vitamin D binding protein Recombinant monoclonal antibody, PBS Only (Detector)

Catalog Number: 86884-2-PBS



## Basic Information

<b>Catalog Number:</b> 86884-2-PBS	<b>GenBank Accession Number:</b> NM_008096.2	<b>Purification Method:</b> Protein A purification
<b>Size:</b> 100ug , Concentration: 1 mg/ml by Nanodrop;	<b>GeneID (NCBI):</b> 14473	<b>CloneNo.:</b> 251938C3
<b>Source:</b> Rabbit	<b>UNIPROT ID:</b> P21614	
<b>Isotype:</b> IgG	<b>Full Name:</b> group specific component	
<b>Immunogen Catalog Number:</b> EG7266	<b>Calculated MW:</b> 54 kDa	

## Applications

**Tested Applications:**  
Cytometric bead array, Sandwich ELISA, Indirect ELISA

**Species Specificity:**  
mouse

## Product Information

86884-2-PBS targets Vitamin D binding protein as part of a matched antibody pair:

MP02757-1: 86884-3-PBS capture and 86884-2-PBS detection (validated in Cytometric bead array, Sandwich ELISA)

Unconjugated rabbit recombinant monoclonal antibody in PBS only (BSA and azide free) storage buffer at a concentration of 1 mg/mL, ready for conjugation. Created using Proteintech's proprietary in-house recombinant technology. Recombinant production enables unrivalled batch-to-batch consistency, easy scale-up, and future security of supply.

This conjugation ready format makes antibodies ideal for use in many applications including: ELISAs, multiplex assays requiring matched pairs, mass cytometry, and multiplex imaging applications. Antibody use should be optimized by the end user for each application and assay.

## Storage

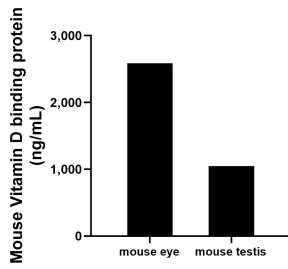
**Storage:**  
Store at -80°C.

**Storage Buffer:**  
PBS only, pH7.3

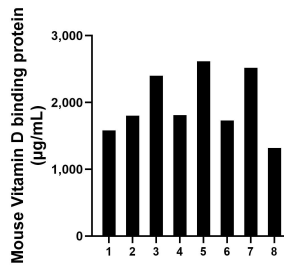
For technical support and original validation data for this product please contact:  
T: 1 (888) 4PTGLAB (1-888-478-4522) (toll free in USA), or 1(312) 455-8498 (outside USA) E: [proteintech@ptglab.com](mailto:proteintech@ptglab.com) W: [ptglab.com](http://ptglab.com)

**This product is exclusively available under Proteintech Group brand and is not available to purchase from any other manufacturer.**

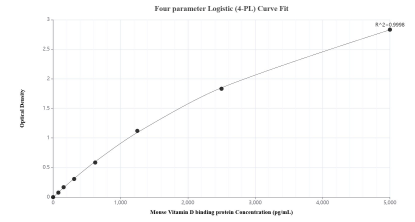
## Selected Validation Data



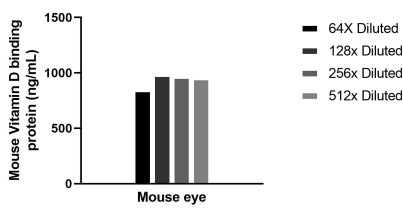
The mean Vitamin D binding protein concentration was determined to be 2,589.1 ng/mL in mouse eye tissue extract based on a 12.4 mg/mL extract load and 1,046.4 ng/mL in mouse testis tissue extract based on a 1.1 mg/mL extract load.



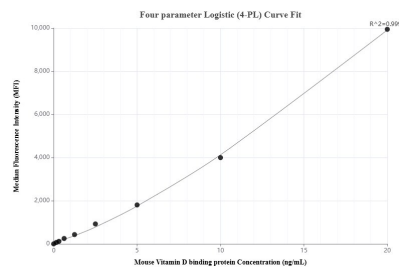
Serum of eight mice was measured. The Vitamin D binding protein concentration of detected samples was determined to be 1,971.9 µg/mL with a range of 1,318.6-2,615.8 µg/mL.



Sandwich ELISA standard curve of MP02757-1, Mouse Vitamin D binding protein Recombinant Matched Antibody Pair - PBS only. 86884-3-PBS was coated to a plate as the capture antibody and incubated with serial dilutions of standard Eg7266. 86884-2-PBS was HRP conjugated as the detection antibody. Range: 78.1-5000 µg/mL



The mean Vitamin D binding protein concentration was determined to be 932.6 ng/mL in Mouse eye tissue extract based on a 12.4 mg/mL extract load.



Cytometric bead array standard curve of MP02757-1, MOUSE Vitamin D binding protein Recombinant Matched Antibody Pair, PBS Only. Capture antibody: 86884-3-PBS. Detection antibody: 86884-2-PBS. Standard: Eg7266. Range: 0.156-20 ng/mL