

For Research Use Only

PPP1R10 Recombinant monoclonal antibody, PBS Only

Catalog Number:86888-1-PBS



Basic Information

Catalog Number:

86888-1-PBS

Size:

100ug , Concentration: 1 mg/ml by Nanodrop;

Source:

Rabbit

Isotype:

IgG

Immunogen Catalog Number:

AG20091

GenBank Accession Number:

BC150310

GeneID (NCBI):

5514

UNIPROT ID:

Q96QC0

Full Name:

protein phosphatase 1, regulatory (inhibitor) subunit 10

Calculated MW:

940 aa, 99 kDa

Observed MW:

99-110 kDa

Purification Method:

Protein A purification

CloneNo.:

251508G3

Applications

Tested Applications:

WB, IF/ICC, Indirect ELISA

Species Specificity:

human

Storage

Storage:

Store at -80°C.

Storage Buffer:

PBS only, pH7.3

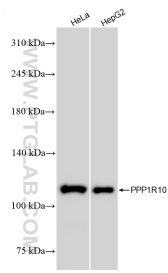
For technical support and original validation data for this product please contact:

T: 1 (888) 4PTGLAB (1-888-478-4522) (toll free in USA), or 1(312) 455-8498 (outside USA)

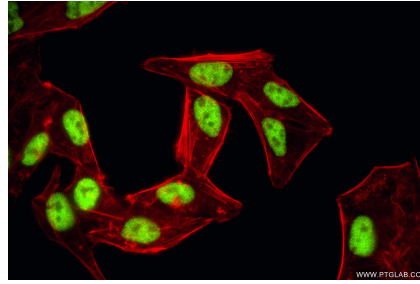
E: proteintech@ptglab.com
W: ptglab.com

This product is exclusively available under Proteintech Group brand and is not available to purchase from any other manufacturer.

Selected Validation Data



Various lysates were subjected to SDS PAGE followed by western blot with 86888-1-RR (PPP1R10 antibody) at dilution of 1:10000 incubated at room temperature for 1.5 hours. This data was developed using the same antibody clone with 86888-1-PBS in a different storage buffer formulation.



Immunofluorescent analysis of (4% PFA) fixed HepG2 cells using PPP1R10 antibody (86888-1-RR, Clone: 251508G3) at dilution of 1:1000 and CoraLite® 488-Conjugated Goat Anti-Rabbit IgG(H+L) (SA00013-2), CL594-Phalloidin (red). This data was developed using the same antibody clone with 86888-1-PBS in a different storage buffer formulation.