

For Research Use Only

# PPP1R10 Recombinant monoclonal antibody

Catalog Number: 86888-1-RR



## Basic Information

|  |   |   |
|--|---|---|
| <b>Catalog Number:</b><br>86888-1-RR                           | <b>GenBank Accession Number:</b><br>BC150310                                  | <b>Purification Method:</b><br>Protein A purification                       |
| <b>Size:</b><br>100ul , Concentration: 1000 µg/ml by Nanodrop; | <b>GeneID (NCBI):</b><br>5514   | <b>CloneNo.:</b><br>251508G3  |
| <b>Source:</b><br>Rabbit                                       | <b>UNIPROT ID:</b><br>Q96QCO  | <b>Recommended Dilutions:</b><br>WB: 1:5000-1:50000<br>IF/ICC: 1:500-1:2000 |
| <b>Isotype:</b><br>IgG   | <b>Full Name:</b><br>protein phosphatase 1, regulatory (inhibitor) subunit 10 |   |
| <b>Immunogen Catalog Number:</b><br>AG20091                    | <b>Calculated MW:</b><br>940 aa, 99 kDa                                       |   |
|  | <b>Observed MW:</b><br>99-110 kDa   |   |

## Applications

|  |   |
|--|---|
| <b>Tested Applications:</b><br>WB, IF/ICC, ELISA | <b>Positive Controls:</b>   |
| <b>Species Specificity:</b><br>human             | <b>WB :</b> HeLa cells, HepG2 cells<br><b>IF/ICC :</b> HepG2 cells, |

## Storage

**Storage:**  
Store at -20°C. Stable for one year after shipment.  
**Storage Buffer:**  
PBS with 0.02% sodium azide and 50% glycerol, pH7.3  
Aliquoting is unnecessary for -20°C storage

\*\*\* 20ul sizes contain 0.1% BSA

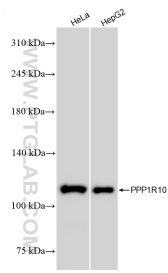
For technical support and original validation data for this product please contact:

T: 1 (888) 4PTGLAB (1-888-478-4522) (toll free in USA), or 1(312) 455-8498 (outside USA)

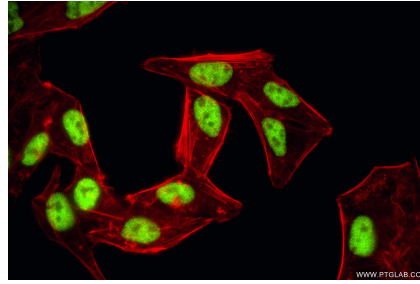
E: [proteintech@ptglab.com](mailto:proteintech@ptglab.com)  
W: [ptglab.com](http://ptglab.com)

This product is exclusively available under Proteintech Group brand and is not available to purchase from any other manufacturer.

## Selected Validation Data



Various lysates were subjected to SDS PAGE followed by western blot with 86888-1-RR (PPP1R10 antibody) at dilution of 1:10000 incubated at room temperature for 1.5 hours.



Immunofluorescent analysis of (4% PFA) fixed HepG2 cells using PPP1R10 antibody (86888-1-RR, Clone: 251508G3) at dilution of 1:1000 and CoraLite® 488-Conjugated Goat Anti-Rabbit IgG(H+L) (SA00013-2), CL594-Phalloidin (red).