

For Research Use Only

# Di-Methyl-Histone H3 (Lys27) Recombinant monoclonal antibody

Catalog Number:86890-2-RR



## Basic Information

<b>Catalog Number:</b> 86890-2-RR	<b>GenBank Accession Number:</b> BC066245	<b>Purification Method:</b> Protein A purification
<b>Size:</b> 100ul , Concentration: 1000 µg/ml by Nanodrop;	<b>GeneID (NCBI):</b> 8350	<b>CloneNo.:</b> 251846E11
<b>Source:</b> Rabbit	<b>UNIPROT ID:</b> P68431	<b>Recommended Dilutions:</b> WB: 1:500-1:2000 IF/ICC: 1:500-1:2000 Dot Blot: 1:500-1:2000
<b>Isotype:</b> IgG	<b>Full Name:</b> histone cluster 1, H3a	
	<b>Observed MW:</b> 17 kDa	

## Applications

**Tested Applications:**  
WB, IF/ICC, Dot Blot, ELISA

**Species Specificity:**  
human, mouse, rat

### Positive Controls:

**WB :** HeLa cells, NIH/3T3 cells, HEK-293T cells, K-562 cells, MCF-7 cells, mouse liver tissue, rat liver tissue

**IF/ICC :** HeLa cells,

**Dot Blot :** / / ,

## Storage

**Storage:**  
Store at -20°C. Stable for one year after shipment.

**Storage Buffer:**  
PBS with 0.02% sodium azide and 50% glycerol, pH7.3

**Aliquoting is unnecessary for -20°C storage**

**\*\*\* 20ul sizes contain 0.1% BSA**

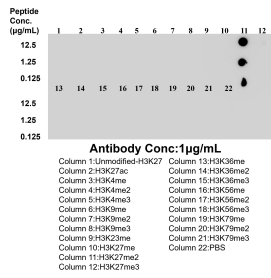
For technical support and original validation data for this product please contact:

T: 1 (888) 4PTGLAB (1-888-478-4522) (toll free  
in USA), or 1(312) 455-8498 (outside USA)

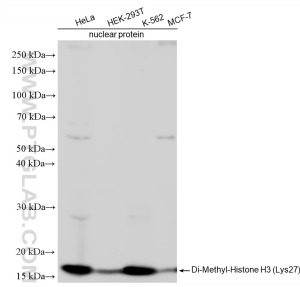
E: [proteintech@ptglab.com](mailto:proteintech@ptglab.com)  
W: [ptglab.com](http://ptglab.com)

**This product is exclusively available under Proteintech Group brand and is not available to purchase from any other manufacturer.**

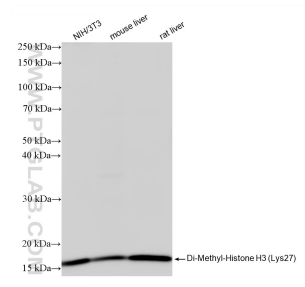
## Selected Validation Data



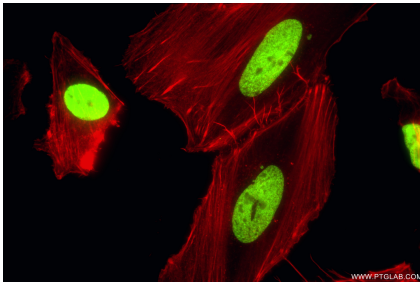
Dot blot analysis was used to confirm the specificity of 86890-2-RR Di-Methyl-Histone H3 (Lys27) antibody. peptides were spotted onto NC and probed with antibody at 1 µg/ml. The amount of peptide (µg/mL) spotted is indicated next to each row.



Various lysates were subjected to SDS PAGE followed by western blot with 86890-2-RR (Di-Methyl-Histone H3 (Lys27) antibody) at dilution of 1:1000 incubated at room temperature for 1.5 hours.



Various lysates were subjected to SDS PAGE followed by western blot with 86890-2-RR (Di-Methyl-Histone H3 (Lys27) antibody) at dilution of 1:1000 incubated at room temperature for 1.5 hours.



Immunofluorescent analysis of (4% PFA) fixed HeLa cells using Di-Methyl-Histone H3 (Lys27) antibody (86890-2-RR, Clone: 251846E11) at dilution of 1:1000 and CoraLite®488-Conjugated Goat Anti-Rabbit IgG(H+L) (SA00013-2), CL594-Phalloidin (red).