

For Research Use Only

# MTX2 Recombinant monoclonal antibody, PBS Only (Detector)

Catalog Number: 86899-1-PBS



## Basic Information

<b>Catalog Number:</b> 86899-1-PBS	<b>GenBank Accession Number:</b> BC017271	<b>Purification Method:</b> Protein A purification
<b>Size:</b> 100ug , Concentration: 1 mg/ml by Nanodrop;	<b>GeneID (NCBI):</b> 10651	<b>CloneNo.:</b> 251514F3
<b>Source:</b> Rabbit	<b>UNIPROT ID:</b> O75431	
<b>Isotype:</b> IgG	<b>Full Name:</b> metaxin 2	
<b>Immunogen Catalog Number:</b> AG2181	<b>Calculated MW:</b> 263 aa, 30 kDa	
	<b>Observed MW:</b> 25-29 kDa	

## Applications

**Tested Applications:**  
WB, IF/ICC, Cytometric bead array, Indirect ELISA

**Species Specificity:**  
human, mouse, rat

## Product Information

86899-1-PBS targets MTX2 as part of a matched antibody pair:

MP02767-1: 86899-3-PBS capture and 86899-1-PBS detection (validated in Cytometric bead array)

Unconjugated rabbit recombinant monoclonal antibody in PBS only (BSA and azide free) storage buffer at a concentration of 1 mg/mL, ready for conjugation. Created using Proteintech's proprietary in-house recombinant technology. Recombinant production enables unrivalled batch-to-batch consistency, easy scale-up, and future security of supply.

This conjugation ready format makes antibodies ideal for use in many applications including: ELISAs, multiplex assays requiring matched pairs, mass cytometry, and multiplex imaging applications. Antibody use should be optimized by the end user for each application and assay.

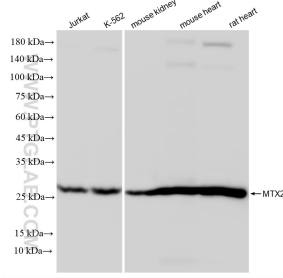
## Storage

**Storage:**  
Store at -80°C.  
**Storage Buffer:**  
PBS only, pH7.3

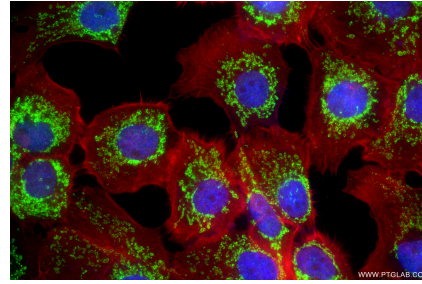
For technical support and original validation data for this product please contact:  
T: 1 (888) 4PTGLAB (1-888-478-4522) (toll free in USA), or 1(312) 455-8498 (outside USA)      E: proteintech@ptglab.com  
W: ptglab.com

**This product is exclusively available under Proteintech Group brand and is not available to purchase from any other manufacturer.**

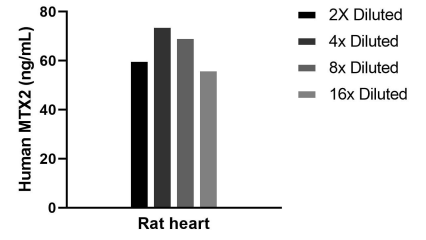
## Selected Validation Data



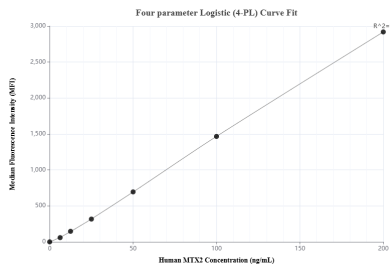
Various lysates were subjected to SDS PAGE followed by western blot with 86899-1-RR (MTX2 antibody) at dilution of 1:10000 incubated at room temperature for 1.5 hours. This data was developed using the same antibody clone with 86899-1-PBS in a different storage buffer formulation.



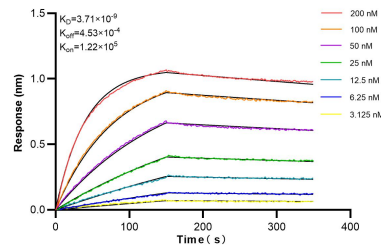
Immunofluorescent analysis of (4% PFA) fixed A431 cells using MTX2 antibody (86899-1-RR, Clone: 251514F3) at dilution of 1:800 and CoraLite® 488-Conjugated Goat Anti-Rabbit IgG(H+L) (SA00013-2), CL594-Phalloidin (red). This data was developed using the same antibody clone with 86899-1-PBS in a different storage buffer formulation.



The mean MTX2 concentration was determined to be 65.1 ng/mL in Rat heart tissue extract based on a 3.0 mg/mL extract load.



Cytometric bead array standard curve of MP02767-1, MTX2 Recombinant Matched Antibody Pair, PBS Only. Capture antibody: 86899-3-PBS. Detection antibody: 86899-1-PBS. Standard: Ag2181. Range: 6.25-200 ng/mL



Biolayer interferometry (BLI) kinetic assays of 86899-1-RR against Human MTX2 were performed. The affinity constant is 3.71 nM.