

For Research Use Only

CGREF1 Recombinant monoclonal antibody

Catalog Number:86905-1-RR



Basic Information

Catalog Number: 86905-1-RR	GenBank Accession Number: BC034764	Purification Method: Protein A purification
Size: 100ul , Concentration: 1000 µg/ml by Nanodrop;	GeneID (NCBI): 10669	CloneNo.: 251879C5
Source: Rabbit	UNIPROT ID: Q99674	Recommended Dilutions: WB: 1:5000-1:50000
Isotype: IgG	Full Name: cell growth regulator with EF-hand domain 1	
Immunogen Catalog Number: AG35664	Calculated MW: 301 aa, 32 kDa	
	Observed MW: 20-22 kDa	

Applications

Tested Applications: WB, ELISA	Positive Controls: WB : mouse brain tissue, rat brain tissue, mouse cerebellum tissue
Species Specificity: human	

Background Information

CGREF1, also known as CGR11, is predicted to enable calcium ion binding activity and to be involved in negative regulation of cell population proliferation. Human GREF1 protein has 4 clustered 17-amino acid repeats within the C terminus, suggesting a structure resembling 4 alpha-helical domains interrupted by distinct turns. Northern blot analysis of rat tissues demonstrated expression of CGR11 predominantly in the whole brain and kidney, with limited expression in heart, lung, liver, and skeletal muscle and no expression in spleen and testis.

Storage

Storage:
Store at -20°C. Stable for one year after shipment.
Storage Buffer:
PBS with 0.02% sodium azide and 50% glycerol, pH7.3
Aliquoting is unnecessary for -20°C storage

*** 20ul sizes contain 0.1% BSA

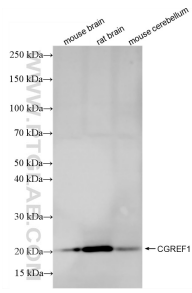
For technical support and original validation data for this product please contact:

T: 1 (888) 4PTGLAB (1-888-478-4522) (toll free in USA), or 1(312) 455-8498 (outside USA)

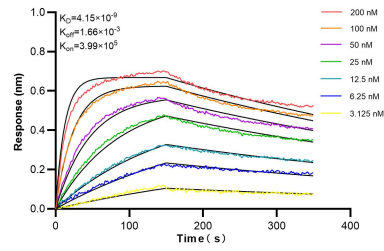
E: proteintech@ptglab.com
W: ptglab.com

This product is exclusively available under Proteintech Group brand and is not available to purchase from any other manufacturer.

Selected Validation Data



Various lysates were subjected to SDS PAGE followed by western blot with 86905-1-RR (CGREF1 antibody) at dilution of 1:10000 incubated at room temperature for 1.5 hours.



Biolayer interferometry (BLI) kinetic assays of 86905-1-RR against Human CGREF1 were performed. The affinity constant is 4.15 nM.