

For Research Use Only

# Mouse CCL20/MIP-3 alpha Recombinant monoclonal antibody, PBS Only

Catalog Number: 86916-1-PBS



## Basic Information

<b>Catalog Number:</b> 86916-1-PBS	<b>GenBank Accession Number:</b> NM_001159738.1	<b>Purification Method:</b> Protein A purification
<b>Size:</b> 100ug , Concentration: 1 mg/ml by Nanodrop;	<b>GeneID (NCBI):</b> 20297	<b>CloneNo.:</b> 250239B2
<b>Source:</b> Rabbit	<b>UNIPROT ID:</b> Q642U4	
<b>Isotype:</b> IgG	<b>Full Name:</b> chemokine (C-C motif) ligand 20	
<b>Immunogen Catalog Number:</b> EG3311	<b>Calculated MW:</b> 11KD	

## Applications

**Tested Applications:**  
WB, IF/ICC, Indirect ELISA

**Species Specificity:**  
mouse

## Background Information

CCL20, also known as macrophage infiltrating factor protein 3a, is a C-C chemokine that specifically binds to the receptor CCR6. CCL20 is produced in various tissues and by a wide range of immune cells, including neutrophils, natural killer cells, T-helper type 17 (Th17) cells, B cells, and various antigen-presenting cells, such as dendritic cells (DCs), Langerhans cells, and macrophages. Increased expression of CCL20 is likely involved in the increased recruitment of dendritic cells observed in fibroinflammatory diseases such as chronic obstructive pulmonary disease (COPD). CCL20 expression is increased by the proinflammatory cytokine IL-1 beta.

## Storage

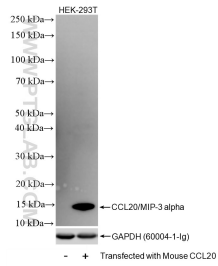
**Storage:**  
Store at -80°C.

**Storage Buffer:**  
PBS only, pH7.3

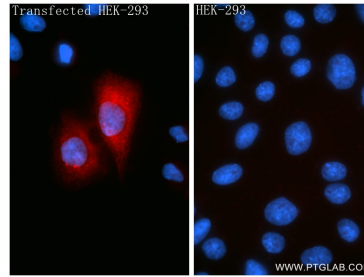
For technical support and original validation data for this product please contact:  
T: 1 (888) 4PTGLAB (1-888-478-4522) (toll free in USA), or 1(312) 455-8498 (outside USA)      E: proteintech@ptglab.com  
W: ptglab.com

This product is exclusively available under Proteintech Group brand and is not available to purchase from any other manufacturer.

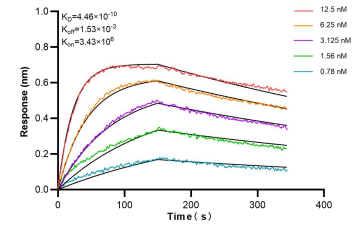
## Selected Validation Data



Non-transfected and mouse CCL20/MIP-3 alpha-transfected HEK-293 cells were subjected to SDS PAGE followed by western blot with 86916-1-RR (Ccl20 antibody) at a dilution of 1:2000, incubated at room temperature for 1.5 hours. This data was developed using the same antibody clone with 86916-1-PBS in a different storage buffer formulation.



Immunofluorescent analysis of (4% PFA) fixed Transfected HEK-293 cells using CCL20/MIP-3 alpha antibody (86916-1-RR, Clone: 250239B2) at dilution of 1:400 and Coralite® 488-Conjugated Goat Anti-Rabbit IgG(H+L) (SA00013-2). This data was developed using the same antibody clone with 86916-1-PBS in a different storage buffer formulation.



Bi-layer interferometry (BLI) kinetic assays of 86916-1-RR against Mouse CCL20/MIP-3 alpha were performed. The affinity constant is 0.446 nM.