

For Research Use Only

CCL20/MIP-3 alpha Recombinant monoclonal antibody

Catalog Number: 86916-1-RR



Basic Information

Catalog Number: 86916-1-RR	GenBank Accession Number: NM_001159738.1	Purification Method: Protein A purification
Size: 100ul , Concentration: 1000 µg/ml by Nanodrop;	GeneID (NCBI): 20297	CloneNo.: 250239B2
Source: Rabbit	UNIPROT ID: Q642U4	Recommended Dilutions: WB: 1:1000-1:4000
Isotype: IgG	Full Name: chemokine (C-C motif) ligand 20	
Immunogen Catalog Number: EG3311	Calculated MW: 11KD	

Applications

Tested Applications: WB, ELISA	Positive Controls: WB : Transfected with Mouse CCL20 Transfected HEK-293T cells,
Species Specificity: mouse	

Background Information

CCL20, also known as macrophage infiltrating factor protein 3a, is a C-C chemokine that specifically binds to the receptor CCR6. CCL20 is produced in various tissues and by a wide range of immune cells, including neutrophils, natural killer cells, T-helper type 17 (Th17) cells, B cells, and various antigen-presenting cells, such as dendritic cells (DCs), Langerhans cells, and macrophages. Increased expression of CCL20 is likely involved in the increased recruitment of dendritic cells observed in fibroinflammatory diseases such as chronic obstructive pulmonary disease (COPD). CCL20 expression is increased by the proinflammatory cytokine IL-1 beta.

Storage

Storage:
Store at -20°C. Stable for one year after shipment.
Storage Buffer:
PBS with 0.02% sodium azide and 50% glycerol, pH7.3
Aliquoting is unnecessary for -20°C storage

*** 20ul sizes contain 0.1% BSA

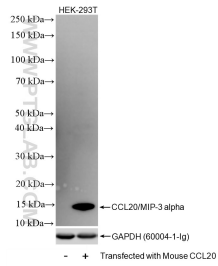
For technical support and original validation data for this product please contact:

T: 1 (888) 4PTGLAB (1-888-478-4522) (toll free in USA), or 1(312) 455-8498 (outside USA)

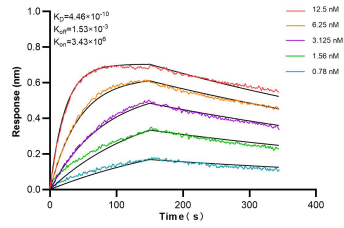
E: proteintech@ptglab.com
W: ptglab.com

This product is exclusively available under Proteintech Group brand and is not available to purchase from any other manufacturer.

Selected Validation Data



Non-transfected and mouse CCL20/MIP-3 alpha-transfected HEK-293 cells were subjected to SDS PAGE followed by western blot with 86916-1-RR (Ccl20 antibody) at a dilution of 1:2000, incubated at room temperature for 1.5 hours.



Biacore BLI kinetic assays of 86916-1-RR against Mouse CCL20/MIP-3 alpha were performed. The affinity constant is 0.446 nM.