

For Research Use Only

# Cytokeratin 85 Recombinant monoclonal antibody

Catalog Number:86921-1-RR



## Basic Information

<b>Catalog Number:</b> 86921-1-RR	<b>GenBank Accession Number:</b> BC166627	<b>Purification Method:</b> Protein A purification
<b>Size:</b> 100ul , Concentration: 1000 µg/ml by Nanodrop;	<b>GeneID (NCBI):</b> 3891	<b>CloneNo.:</b> 252005C6
<b>Source:</b> Rabbit	<b>UNIPROT ID:</b> P78386	<b>Recommended Dilutions:</b> WB: 1:5000-1:50000
<b>Isotype:</b> IgG	<b>Full Name:</b> keratin 85	
	<b>Observed MW:</b> 56 kDa	

## Applications

<b>Tested Applications:</b> WB, ELISA	<b>Positive Controls:</b> WB : mouse skin tissue,
<b>Species Specificity:</b> human, mouse	

## Background Information

KRT85 is a member of the keratin gene family. As a type II hair keratin, it is a basic protein which heterodimerizes with type I keratins to form hair and nails. The type II hair keratins are clustered in a region of chromosome 12q13 and are grouped into two distinct subfamilies based on structure similarity. One subfamily, consisting of KRTHB1, KRTHB3, and KRTHB6, is highly related. The other less-related subfamily includes KRTHB2, KRTHB4, and KRTHB5.

## Storage

**Storage:**  
Store at -20°C. Stable for one year after shipment.  
**Storage Buffer:**  
PBS with 0.02% sodium azide and 50% glycerol, pH7.3  
Aliquoting is unnecessary for -20°C storage

\*\*\* 20ul sizes contain 0.1% BSA

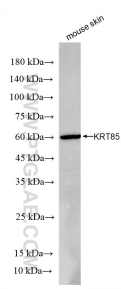
For technical support and original validation data for this product please contact:

T: 1 (888) 4PTGLAB (1-888-478-4522) (toll free in USA), or 1(312) 455-8498 (outside USA)

E: [proteintech@ptglab.com](mailto:proteintech@ptglab.com)  
W: [ptglab.com](http://ptglab.com)

This product is exclusively available under Proteintech Group brand and is not available to purchase from any other manufacturer.

## Selected Validation Data



mouse skin tissue were subjected to SDS PAGE followed by western blot with 86921-1-RR (KRT85 antibody) at dilution of 1:10000 incubated at room temperature for 1.5 hours.