

For Research Use Only

GFRA2 Recombinant monoclonal antibody, PBS Only

Catalog Number: 86922-1-PBS



Basic Information

Catalog Number: 86922-1-PBS	GenBank Accession Number: BC041688	Purification Method: Protein A purification
Size: 100ug, Concentration: 1 mg/ml by Nanodrop;	GeneID (NCBI): 2675	CloneNo.: 252003B2
Source: Rabbit	UNIPROT ID: O00451	
Isotype: IgG	Full Name: GDNF family receptor alpha 2	
Immunogen Catalog Number: EG4064	Calculated MW: 464 aa, 52 kDa	
	Observed MW: 50-55 kDa	

Applications

Tested Applications:
WB, Indirect ELISA

Species Specificity:
human

Background Information

GFRA2, also named as GDNFRB, RETL2 and TRNR2, belongs to the GDNFR family. It is a receptor for neurturin. GFRA2 mediates the NRTN-induced autophosphorylation and activation of the RET receptor. It is a potent survival factor for central dopaminergic neurons, motor neurons, and several other populations of neurons in the central and peripheral nervous systems. The GDNF signal is mediated by a complex of the receptor tyrosine kinase RET and a glycosylphosphatidylinositol (GPI)-linked protein, GDNFRA. GFRA2 has three isoforms with MW 34-36 kDa, 39-41 kDa and 50-55 kDa. This antibody recognizes 50-55 kDa isoform.

Storage

Storage:
Store at -80°C.

Storage Buffer:
PBS only, pH7.3

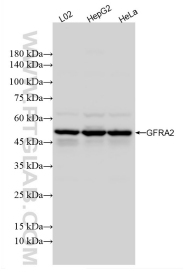
For technical support and original validation data for this product please contact:

T: 1 (888) 4PTGLAB (1-888-478-4522) (toll free in USA), or 1(312) 455-8498 (outside USA)

E: proteintech@ptglab.com
W: ptglab.com

This product is exclusively available under Proteintech Group brand and is not available to purchase from any other manufacturer.

Selected Validation Data



Various lysates were subjected to SDS PAGE followed by western blot with 86922-1-RR (GFRA2 antibody) at dilution of 1:5000 incubated at room temperature for 1.5 hours. This data was developed using the same antibody clone with 86922-1-PBS in a different storage buffer formulation.