

For Research Use Only

GFRA2 Recombinant monoclonal antibody

Catalog Number:86922-1-RR



Basic Information

Catalog Number: 86922-1-RR	GenBank Accession Number: BC041688	Purification Method: Protein A purification
Size: 100ul , Concentration: 1000 µg/ml by Nanodrop;	GeneID (NCBI): 2675	CloneNo.: 252003B2
Source: Rabbit	UNIPROT ID: O00451	Recommended Dilutions: WB: 1:2000-1:10000
Isotype: IgG	Full Name: GDNF family receptor alpha 2	
Immunogen Catalog Number: EG4064	Calculated MW: 464 aa, 52 kDa	
	Observed MW: 50-55 kDa	

Applications

Tested Applications: WB, ELISA	Positive Controls: WB : L02 cells, HepG2 cells, HeLa cells
Species Specificity: human	

Background Information

GFRA2, also named as GDNFRB, RETL2 and TRNR2, belongs to the GDNFR family. It is a receptor for neurturin. GFRA2 mediates the NRTN-induced autophosphorylation and activation of the RET receptor. It is a potent survival factor for central dopaminergic neurons, motor neurons, and several other populations of neurons in the central and peripheral nervous systems. The GDNF signal is mediated by a complex of the receptor tyrosine kinase RET and a glycosylphosphatidylinositol (GPI)-linked protein, GDNFRA. GFRA2 has three isoforms with MW 34-36 kDa, 39-41 kDa and 50-55 kDa. This antibody recognizes 50-55 kDa isoform.

Storage

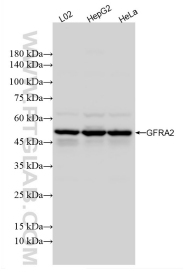
Storage:
Store at -20°C. Stable for one year after shipment.
Storage Buffer:
PBS with 0.02% sodium azide and 50% glycerol, pH7.3
Aliquoting is unnecessary for -20°C storage

*** 20ul sizes contain 0.1% BSA

For technical support and original validation data for this product please contact:
T: 1 (888) 4PTGLAB (1-888-478-4522) (toll free in USA), or 1(312) 455-8498 (outside USA)
E: proteintech@ptglab.com
W: ptglab.com

This product is exclusively available under Proteintech Group brand and is not available to purchase from any other manufacturer.

Selected Validation Data



Various lysates were subjected to SDS PAGE followed by western blot with 86922-1-RR (GFRA2 antibody) at dilution of 1:5000 incubated at room temperature for 1.5 hours.