

For Research Use Only

GM-CSF Recombinant monoclonal antibody

Catalog Number: 86923-1-RR



Basic Information

Catalog Number: 86923-1-RR	GenBank Accession Number: NM_053852.1	Purification Method: Protein A purification
Size: 100ul , Concentration: 1000 µg/ml by Nanodrop;	GeneID (NCBI): 116630	CloneNo.: 243117B1
Source: Rabbit	UNIPROT ID: P48750	Recommended Dilutions: WB: 1:500-1:2000
Isotype: IgG	Full Name: colony stimulating factor 2 (granulocyte-macrophage)	
Immunogen Catalog Number: EG3202	Calculated MW: 17 kDa	

Applications

Tested Applications: WB, ELISA	Positive Controls: WB : Transfected with Rat GM-CSF/CSF2 HEK-293T cells,
Species Specificity: rat	

Background Information

Gm-csf, also known as Csf2, is a monomeric glycoprotein secreted by macrophages, T cells, mast cells, NK cells, endothelial cells and fibroblasts that functions as a cytokine. Gm-csf was first characterized as a hematopoietic growth factor that stimulates the proliferation of myeloid cells from bone-marrow progenitors. Gm-csf is now recognized as an important activating and differentiation factor for immune cells, and is essential for a wide range of biological processes in both innate and adaptive immunity. Gm-csf has been shown to protect against pulmonary infection and intestinal inflammation, and it is necessary for normal pulmonary and colon homeostasis.

Storage

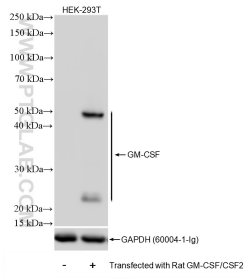
Storage:
Store at -20°C. Stable for one year after shipment.
Storage Buffer:
PBS with 0.02% sodium azide and 50% glycerol, pH7.3
Aliquoting is unnecessary for -20°C storage

*** 20ul sizes contain 0.1% BSA

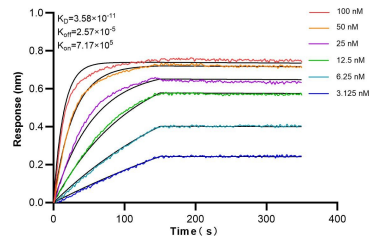
For technical support and original validation data for this product please contact:
T: 1 (888) 4PTGLAB (1-888-478-4522) (toll free in USA), or 1(312) 455-8498 (outside USA) E: proteintech@ptglab.com
W: ptglab.com

This product is exclusively available under Proteintech Group brand and is not available to purchase from any other manufacturer.

Selected Validation Data



Non-transfected and rat GM-CS Transfected HEK-293T cells were subjected to SDS PAGE followed by western blot with 86923-1-RR (GM-CSF/CSF2 antibody) at dilution of 1:1000 incubated at room temperature for 1.5 hours.



Biolayer interferometry (BLI) kinetic assays of 86923-1-RR against Rat GM-CSF were performed. The affinity constant is 35.8 pM.