

For Research Use Only

# PEG10 Recombinant monoclonal antibody

Catalog Number: 86928-4-RR



## Basic Information

|  |  |   |
|--|--|---|
| <b>Catalog Number:</b><br>86928-4-RR                           | <b>GenBank Accession Number:</b><br>BC050659 | <b>Purification Method:</b><br>Protein A purification |
| <b>Size:</b><br>100ul , Concentration: 1000 µg/ml by Nanodrop; | <b>GeneID (NCBI):</b><br>23089               | <b>CloneNo.:</b><br>251980A2                          |
| <b>Source:</b><br>Rabbit                                       | <b>UNIPROT ID:</b><br>Q86TG7                 | <b>Recommended Dilutions:</b><br>WB: 1:5000-1:50000   |
| <b>Isotype:</b><br>IgG   | <b>Full Name:</b><br>paternally expressed 10 |   |
| <b>Immunogen Catalog Number:</b><br>AG5754                     | <b>Calculated MW:</b><br>80 kDa              |   |
|  | <b>Observed MW:</b><br>50 kDa, 100 kDa       |   |

## Applications

|  |   |
|--|---|
| <b>Tested Applications:</b><br>WB, ELISA | <b>Positive Controls:</b><br>WB : HeLa cells, HepG2 cells |
| <b>Species Specificity:</b><br>human     |   |

## Background Information

Paternally expressed imprinted gene 10 (PEG10) is an evolutionarily conserved HERV gene belonging to the Ty3/Gypsy family of retrotransposons. The mRNA of PEG10 encodes at least two protein isoforms: the major PEG10 protein product reading frame 1 (RF1-PEG10, ~50 kDa) and reading frames 1 and 2 (RF1/RF2-PEG10, ~100 kDa), which are translated by a typical retroviral-1 ribosomal frameshift mechanism. PEG10 is strongly expressed in placenta, ovary and testis as well as somatic adult organs including brain, kidney and lung. Researches on mice suggest that PEG10 plays an important role in placenta formation and adipocyte differentiation, and its knockout can cause embryonic lethality. (PMID: 30123090, PMID: 32244497)

## Storage

**Storage:**  
Store at -20°C. Stable for one year after shipment.  
**Storage Buffer:**  
PBS with 0.02% sodium azide and 50% glycerol, pH7.3  
Aliquoting is unnecessary for -20°C storage

\*\*\* 20ul sizes contain 0.1% BSA

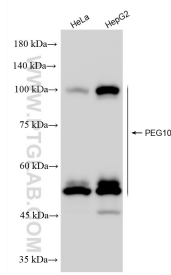
For technical support and original validation data for this product please contact:

T: 1 (888) 4PTGLAB (1-888-478-4522) (toll free in USA), or 1(312) 455-8498 (outside USA)

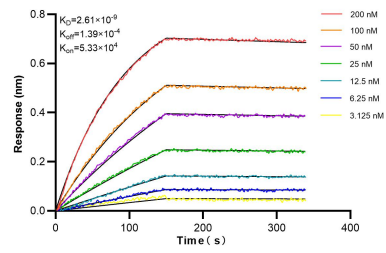
E: [proteintech@ptglab.com](mailto:proteintech@ptglab.com)  
W: [ptglab.com](http://ptglab.com)

This product is exclusively available under Proteintech Group brand and is not available to purchase from any other manufacturer.

## Selected Validation Data



Various lysates were subjected to SDS PAGE followed by western blot with 86928-4-RR (PEG10 antibody) at dilution of 1:10000 incubated at room temperature for 1.5 hours.



Biolayer interferometry (BLI) kinetic assays of 86928-4-RR against Human PEG10 were performed. The affinity constant is 2.61 nM.