

For Research Use Only

# CLDN17 Recombinant monoclonal antibody, PBS Only

Catalog Number: 86936-1-PBS



## Basic Information

**Catalog Number:**

86936-1-PBS

**Size:**

100ug, Concentration: 1 mg/ml by Nanodrop;

**Source:**

Rabbit

**Isotype:**

IgG

**GenBank Accession Number:**

BC101503

**GeneID (NCBI):**

26285

**UNIPROT ID:**

P56750

**Full Name:**

claudin 17

**Calculated MW:**

224 aa, 25 kDa

**Observed MW:**

27 kDa

**Purification Method:**

Protein A purification

**CloneNo.:**

251114D9

## Applications

**Tested Applications:**

WB, Indirect ELISA

**Species Specificity:**

human

## Background Information

CLDN17 (Claudin-17) is a 27-kDa tetra-transmembrane protein belonging to the claudin family of tight-junction components. It forms paracellular ion-selective pores and is predominantly expressed in renal proximal tubule epithelium, gastrointestinal tract, and lung alveolar epithelium, where it contributes to Na<sup>+</sup>/Cl<sup>-</sup> permeability and acid-base homeostasis.

## Storage

**Storage:**

Store at -80°C.

**Storage Buffer:**

PBS only, pH7.3

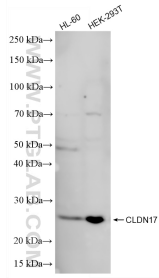
For technical support and original validation data for this product please contact:

T: 1 (888) 4PTGLAB (1-888-478-4522) (toll free in USA), or 1(312) 455-8498 (outside USA)

E: [proteintech@ptglab.com](mailto:proteintech@ptglab.com)  
W: [ptglab.com](http://ptglab.com)

**This product is exclusively available under Proteintech Group brand and is not available to purchase from any other manufacturer.**

## Selected Validation Data



Various lysates were subjected to SDS PAGE followed by western blot with 86936-1-RR (CLDN17 antibody) at dilution of 1:5000 incubated at room temperature for 1.5 hours. This data was developed using the same antibody clone with 86936-1-PBS in a different storage buffer formulation.