

For Research Use Only

# CLDN17 Recombinant monoclonal antibody

Catalog Number:86936-1-RR



## Basic Information

<b>Catalog Number:</b> 86936-1-RR	<b>GenBank Accession Number:</b> BC101503	<b>Purification Method:</b> Protein A purification
<b>Size:</b> 100ul , Concentration: 1000 µg/ml by Nanodrop;	<b>GeneID (NCBI):</b> 26285	<b>CloneNo.:</b> 251114D9
<b>Source:</b> Rabbit	<b>UNIPROT ID:</b> P56750	<b>Recommended Dilutions:</b> WB: 1:2000-1:10000
<b>Isotype:</b> IgG	<b>Full Name:</b> claudin 17	
	<b>Calculated MW:</b> 224 aa, 25 kDa	
	<b>Observed MW:</b> 27 kDa	

## Applications

<b>Tested Applications:</b> WB, ELISA	<b>Positive Controls:</b> WB : HL-60 cells, HEK-293T cells
<b>Species Specificity:</b> human	

## Background Information

CLDN17 (Claudin-17) is a 27-kDa tetra-transmembrane protein belonging to the claudin family of tight-junction components. It forms paracellular ion-selective pores and is predominantly expressed in renal proximal tubule epithelium, gastrointestinal tract, and lung alveolar epithelium, where it contributes to Na<sup>+</sup>/Cl<sup>-</sup> permeability and acid-base homeostasis.

## Storage

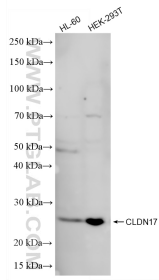
**Storage:**  
Store at -20°C. Stable for one year after shipment.  
**Storage Buffer:**  
PBS with 0.02% sodium azide and 50% glycerol, pH7.3  
Aliquoting is unnecessary for -20°C storage

\*\*\* 20ul sizes contain 0.1% BSA

For technical support and original validation data for this product please contact:  
T: 1 (888) 4PTGLAB (1-888-478-4522) (toll free in USA), or 1(312) 455-8498 (outside USA)      E: proteintech@ptglab.com  
W: ptglab.com

This product is exclusively available under Proteintech Group brand and is not available to purchase from any other manufacturer.

## Selected Validation Data



Various lysates were subjected to SDS PAGE followed by western blot with 86936-1-RR (CLDN17 antibody) at dilution of 1:5000 incubated at room temperature for 1.5 hours.