

For Research Use Only

IgJ Recombinant monoclonal antibody, PBS Only (Capture)

Catalog Number: 86939-6-PBS



Basic Information

Catalog Number: 86939-6-PBS	GenBank Accession Number: BC038982	Purification Method: Protein A purification
Size: 100ug, Concentration: 1 mg/ml by Nanodrop;	GeneID (NCBI): 3512	CloneNo.: 251691A6
Source: Rabbit	UNIPROT ID: P01591	
Isotype: IgG	Full Name: immunoglobulin J polypeptide, linker protein for immunoglobulin alpha and mu polypeptides	
Immunogen Catalog Number: AG4559	Calculated MW: 158 aa, 18 kDa	

Applications

Tested Applications:
Sandwich ELISA, Indirect ELISA

Species Specificity:
human

Product Information

86939-6-PBS targets IgJ as part of a matched antibody pair:

MP02790-2: 86939-6-PBS capture and 86939-5-PBS detection (validated in Sandwich ELISA)

Unconjugated rabbit recombinant monoclonal antibody in PBS only (BSA and azide free) storage buffer at a concentration of 1 mg/mL, ready for conjugation. Created using Proteintech's proprietary in-house recombinant technology. Recombinant production enables unrivalled batch-to-batch consistency, easy scale-up, and future security of supply.

This conjugation ready format makes antibodies ideal for use in many applications including: ELISAs, multiplex assays requiring matched pairs, mass cytometry, and multiplex imaging applications. Antibody use should be optimized by the end user for each application and assay.

Storage

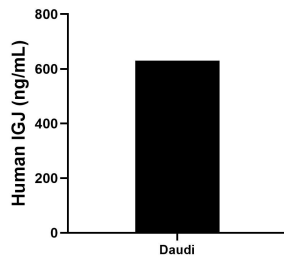
Storage:
Store at -80°C.

Storage Buffer:
PBS only, pH7.3

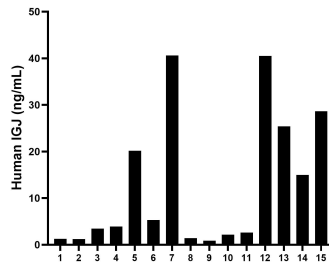
For technical support and original validation data for this product please contact:
T: 1 (888) 4PTGLAB (1-888-478-4522) (toll free in USA), or 1(312) 455-8498 (outside USA) E: proteintech@ptglab.com
W: ptglab.com

This product is exclusively available under Proteintech Group brand and is not available to purchase from any other manufacturer.

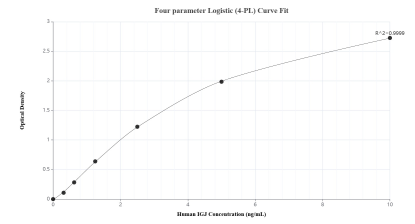
Selected Validation Data



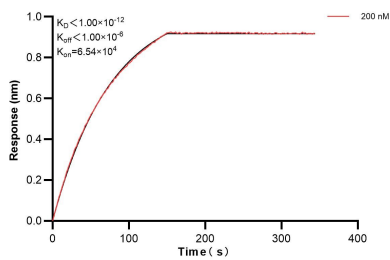
The mean IGJ concentration was determined to be 630.09 ng/mL in Daudi cell extract based on a 1.10 mg/mL extract load.



Serum of fifteen individual healthy human donors was measured. The IGJ concentration of detected samples was determined to be 12.84 ng/mL with a range of 0.85-40.61 ng/mL.



Sandwich ELISA standard curve of MP02790-2, Human IGJ Recombinant Matched Antibody Pair - PBS only. 86939-6-PBS was coated to a plate as the capture antibody and incubated with serial dilutions of standard Ag4559. 86939-5-PBS was HRP conjugated as the detection antibody. Range: 0.313-10 ng/mL



Biolayer interferometry (BLI) kinetic assay of 86939-6-PBS against Human IGJ was performed. The affinity constant is below 1 pM.