

For Research Use Only

TOMM40L Recombinant monoclonal antibody, PBS Only

Catalog Number: 86943-1-PBS



Basic Information

Catalog Number:

86943-1-PBS

Size:

100ug, Concentration: 1 mg/ml by Nanodrop;

Source:

Rabbit

Isotype:

IgG

Immunogen Catalog Number:

AG9401

GenBank Accession Number:

BC014946

GeneID (NCBI):

84134

UNIPROT ID:

Q969M1

Full Name:

translocase of outer mitochondrial membrane 40 homolog (yeast)-like

Calculated MW:

308 aa, 34 kDa

Observed MW:

33-38 kDa

Purification Method:

Protein A purification

CloneNo.:

251895B2

Applications

Tested Applications:

WB, Indirect ELISA

Species Specificity:

human, mouse, rat

Background Information

TOMM40L (Mitochondrial import receptor subunit TOM40B) is a potential channel-forming protein implicated in the import of protein precursors into mitochondria.

Storage

Storage:

Store at -80°C.

Storage Buffer:

PBS only, pH7.3

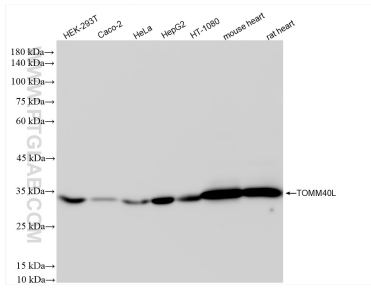
For technical support and original validation data for this product please contact:

T: 1 (888) 4PTGLAB (1-888-478-4522) (toll free in USA), or 1(312) 455-8498 (outside USA)

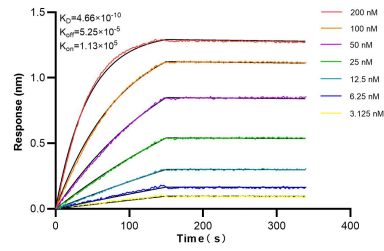
E: proteintech@ptglab.com
W: ptglab.com

This product is exclusively available under Proteintech Group brand and is not available to purchase from any other manufacturer.

Selected Validation Data



Various lysates were subjected to SDS PAGE followed by western blot with 86943-1-RR (TOMM40L antibody) at dilution of 1:3000 incubated at room temperature for 1.5 hours. This data was developed using the same antibody clone with 86943-1-PBS in a different storage buffer formulation.



Biolayer interferometry (BLI) kinetic assays of 86943-1-RR against Human TOMM40L were performed. The affinity constant is 0.466 nM.