

For Research Use Only

TOMM40L Recombinant monoclonal antibody

Catalog Number: 86943-1-RR



Basic Information

Catalog Number:

86943-1-RR

Size:

100ul, Concentration: 1000 µg/ml by Nanodrop;

Source:

Rabbit

Isotype:

IgG

Immunogen Catalog Number:

AG9401

GenBank Accession Number:

BC014946

GeneID (NCBI):

84134

UNIPROT ID:

Q969M1

Full Name:

translocase of outer mitochondrial membrane 40 homolog (yeast)-like

Calculated MW:

308 aa, 34 kDa

Observed MW:

33-38 kDa

Purification Method:

Protein A purification

CloneNo.:

251895B2

Recommended Dilutions:

WB: 1:1000-1:6000

Applications

Tested Applications:

WB, ELISA

Species Specificity:

human, mouse, rat

Positive Controls:

WB: HEK-293T cells, Caco-2 cells, HeLa cells, HepG2 cells, HT-1080 cells, mouse heart tissue, rat heart tissue

Background Information

TOMM40L (Mitochondrial import receptor subunit TOM40B) is a potential channel-forming protein implicated in the import of protein precursors into mitochondria.

Storage

Storage:

Store at -20°C. Stable for one year after shipment.

Storage Buffer:

PBS with 0.02% sodium azide and 50% glycerol, pH7.3

Aliquoting is unnecessary for -20°C storage

*** 20ul sizes contain 0.1% BSA

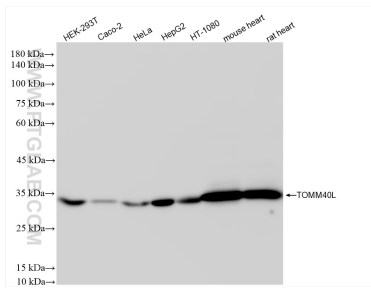
For technical support and original validation data for this product please contact:

T: 1 (888) 4PTGLAB (1-888-478-4522) (toll free in USA), or 1(312) 455-8498 (outside USA)

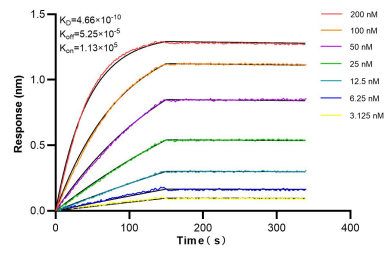
E: proteintech@ptglab.com
W: ptglab.com

This product is exclusively available under Proteintech Group brand and is not available to purchase from any other manufacturer.

Selected Validation Data



Various lysates were subjected to SDS PAGE followed by western blot with 86943-1-RR (TOMM40L antibody) at dilution of 1:3000 incubated at room temperature for 1.5 hours.



Biolayer interferometry (BLI) kinetic assays of 86943-1-RR against Human TOMM40L were performed. The affinity constant is 0.466 nM.