

For Research Use Only

PTPRF Recombinant monoclonal antibody

Catalog Number: 86944-1-RR



Basic Information

Catalog Number: 86944-1-RR	GenBank Accession Number: NM_002840.4	Purification Method: Protein A purification
Size: 100ul , Concentration: 1000 µg/ml by Nanodrop;	GeneID (NCBI): 5792	CloneNo.: 252028F8
Source: Rabbit	UNIPROT ID: P10586-1	Recommended Dilutions: WB: 1:1000-1:6000 IF/ICC: 1:250-1:1000
Isotype: IgG	Full Name: protein tyrosine phosphatase, receptor type, F	
Immunogen Catalog Number: EG6919	Calculated MW: 213 kDa	
	Observed MW: 150 kDa	

Applications

Tested Applications: WB, IF/ICC, ELISA	Positive Controls:
Species Specificity: human, mouse, rat	WB : HeLa cells, mouse liver tissue, A549 cells, HSC-T6 cells IF/ICC : SK-BR-3 cells,

Background Information

PTPRF (Protein Tyrosine Phosphatase Receptor Type F) is a receptor protein tyrosine phosphatase, also known as LAR. PTPRF is a transmembrane protein with extracellular domain, transmembrane domain and two intracellular catalytic domains in series. It is located in the cell membrane and participates in the interaction between cells or cell matrix. It is widely expressed in many tissues, including fat, skin, heart, lung, liver, kidney, pancreas, small intestine, colon, brain, skeletal muscle, spleen, peripheral white blood cells and so on. The protein plays an important role in regulating a variety of cell processes, including cell growth, differentiation, mitotic cycle and carcinogenic transformation. In the insulin-responsive tissues of obese and insulin-resistant individuals, the expression level of PTPRF is increased, which may contribute to the pathogenesis of insulin resistance. PTPRF showed expression changes in many cancers, such as breast cancer, thyroid cancer, non-small cell lung cancer and so on. In gastric adenocarcinoma, PTPRF, as a new tumor suppressor, plays a role by inactivating ERK1/2 signaling pathway (PMID: 32973331). The total length of the protein is 175-200kd, and after cutting, it forms 125-150 and 80-85kd, 70 and 72kd fragments (PMID: 1547787, PMID: 17259169).

Storage

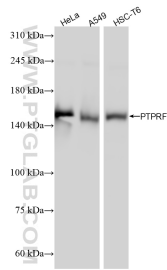
Storage:
Store at -20°C. Stable for one year after shipment.
Storage Buffer:
PBS with 0.02% sodium azide and 50% glycerol, pH7.3
Aliquoting is unnecessary for -20°C storage

*** 20ul sizes contain 0.1% BSA

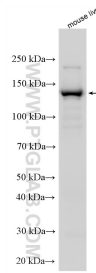
For technical support and original validation data for this product please contact:
T: 1 (888) 4PTGLAB (1-888-478-4522) (toll free in USA), or 1(312) 455-8498 (outside USA)
E: proteintech@ptglab.com
W: ptglab.com

This product is exclusively available under Proteintech Group brand and is not available to purchase from any other manufacturer.

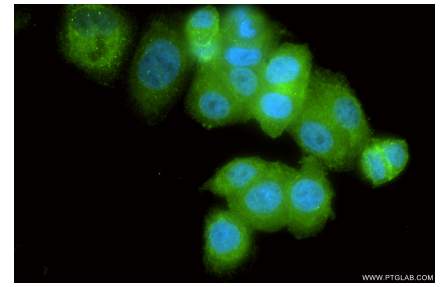
Selected Validation Data



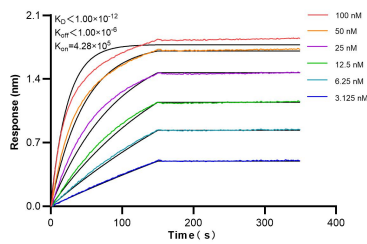
Various lysates were subjected to SDS PAGE followed by western blot with 86944-1-RR (PTPRF antibody) at dilution of 1:3000 incubated at room temperature for 1.5 hours.



Various lysates were subjected to SDS PAGE followed by western blot with 86944-1-RR (PTPRF antibody) at dilution of 1:5000 incubated at room temperature for 1.5 hours.



Immunofluorescent analysis of (4% PFA) fixed SK-BR-3 cells using PTPRF antibody (86944-1-RR, Clone: 252028F8) at dilution of 1:500 and Multi-rAb CoraLite® Plus 488-Goat Anti-Rabbit Recombinant Secondary Antibody (H+L) (RGAR002).



Biolayer interferometry (BLI) kinetic assays of 86944-1-RR against Human PTPRF were performed. The affinity constant is below 1 pM.