

For Research Use Only

PTPRF Recombinant monoclonal antibody, PBS Only (Detector)

Catalog Number: 86944-2-PBS



Basic Information

Catalog Number: 86944-2-PBS	GenBank Accession Number: NM_002840.4	Purification Method: Protein A purification
Size: 100ug , Concentration: 1 mg/ml by Nanodrop;	GeneID (NCBI): 5792	CloneNo.: 252028B7
Source: Rabbit	UNIPROT ID: P10586-1	
Isotype: IgG	Full Name: protein tyrosine phosphatase, receptor type, F	
Immunogen Catalog Number: EG6919	Calculated MW: 213 kDa	

Applications

Tested Applications:
Cytometric bead array, Sandwich ELISA, Indirect ELISA

Species Specificity:
human

Product Information

86944-2-PBS targets PTPRF as part of a matched antibody pair:

MP02791-1: 86944-1-PBS capture and 86944-2-PBS detection (validated in Cytometric bead array, Sandwich ELISA)

Unconjugated rabbit recombinant monoclonal antibody in PBS only (BSA and azide free) storage buffer at a concentration of 1 mg/mL, ready for conjugation. Created using Proteintech's proprietary in-house recombinant technology. Recombinant production enables unrivalled batch-to-batch consistency, easy scale-up, and future security of supply.

This conjugation ready format makes antibodies ideal for use in many applications including: ELISAs, multiplex assays requiring matched pairs, mass cytometry, and multiplex imaging applications. Antibody use should be optimized by the end user for each application and assay.

Storage

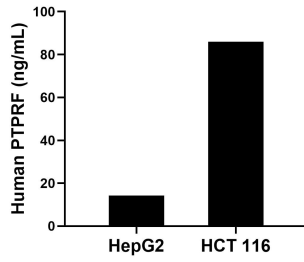
Storage:
Store at -80°C.

Storage Buffer:
PBS only, pH7.3

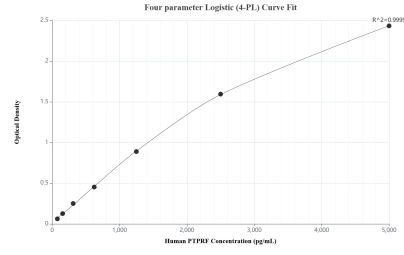
For technical support and original validation data for this product please contact:
T: 1 (888) 4PTGLAB (1-888-478-4522) (toll free in USA), or 1(312) 455-8498 (outside USA) E: proteintech@ptglab.com
W: ptglab.com

This product is exclusively available under Proteintech Group brand and is not available to purchase from any other manufacturer.

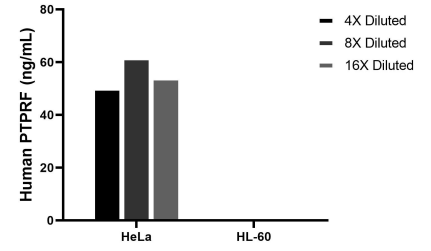
Selected Validation Data



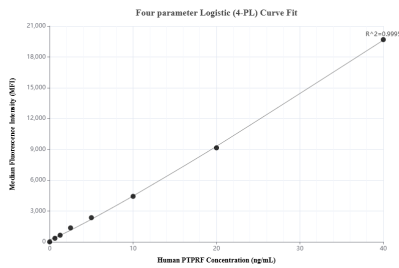
The mean PTPRF concentration was determined to be 14.2 ng/mL in HepG2 cell extract based on a 1.2 mg/mL extract load and 85.9 ng/mL in HCT 116 cell extract based on a 1.3 mg/mL extract load.



Sandwich ELISA standard curve of MP02791-1, Human PTPRF Recombinant Matched Antibody Pair - PBS only. 86944-1-PBS was coated to a plate as the capture antibody and incubated with serial dilutions of standard Eg6919. 86944-2-PBS was HRP conjugated as the detection antibody. Range: 78.1-5000 pg/mL



The mean PTPRF concentration was determined to be 55.3 ng/mL in HeLa cell extract based on a 1.2 mg/mL extract load, HL-60 cell extract were served as a negative control.



Cytometric bead array standard curve of MP02791-1, PTPRF Recombinant Matched Antibody Pair, PBS Only. Capture antibody: 86944-1-PBS. Detection antibody: 86944-2-PBS. Standard: Eg6919. Range: 0.625-40 ng/mL