

For Research Use Only

# EMB Recombinant monoclonal antibody, PBS Only (Capture)

Catalog Number: 86946-1-PBS



## Basic Information

<b>Catalog Number:</b> 86946-1-PBS	<b>GenBank Accession Number:</b> NM_198449.3	<b>Purification Method:</b> Protein A purification
<b>Size:</b> 100ug , Concentration: 1 mg/ml by Nanodrop;	<b>GeneID (NCBI):</b> 133418	<b>CloneNo.:</b> 251953E3
<b>Source:</b> Rabbit	<b>UNIPROT ID:</b> Q6PCB8	
<b>Isotype:</b> IgG	<b>Full Name:</b> embigin homolog (mouse)	
<b>Immunogen Catalog Number:</b> EG6407	<b>Calculated MW:</b> 37 kDa	
	<b>Observed MW:</b> 60-75 kDa	

## Applications

**Tested Applications:**  
WB, IF/ICC, Cytometric bead array, Indirect ELISA

**Species Specificity:**  
human

## Product Information

86946-1-PBS targets EMB as part of a matched antibody pair:

MP02786-1: 86946-1-PBS capture and 86946-2-PBS detection (validated in Cytometric bead array)

Unconjugated rabbit recombinant monoclonal antibody in PBS only (BSA and azide free) storage buffer at a concentration of 1 mg/mL, ready for conjugation. Created using Proteintech's proprietary in-house recombinant technology. Recombinant production enables unrivalled batch-to-batch consistency, easy scale-up, and future security of supply.

This conjugation ready format makes antibodies ideal for use in many applications including: ELISAs, multiplex assays requiring matched pairs, mass cytometry, and multiplex imaging applications. Antibody use should be optimized by the end user for each application and assay.

## Background Information

EMB, also named as Embigin, is a 327 amino acid protein, which contains two Ig-like V-type (immunoglobulin-like) domains. EMB as a membrane protein may function as a regulator of cell/ECM interactions during development and in the homeostasis of normal adult tissues. EMB is a transmembrane glycoprotein with a protein component of 34 kDa, but western blot analysis of embigin in mouse soleus muscles detects a glycosylated full-length protein with an molecular mass of 70 kDa. (PMID: 19164284)

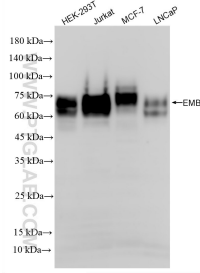
## Storage

**Storage:**  
Store at -80°C.  
**Storage Buffer:**  
PBS only, pH7.3

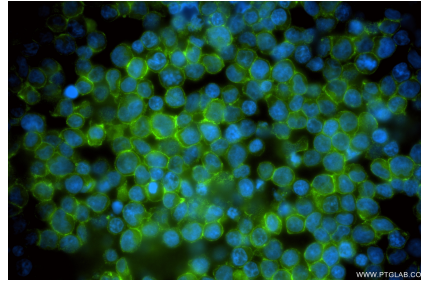
For technical support and original validation data for this product please contact:  
T: 1 (888) 4PTGLAB (1-888-478-4522) (toll free in USA), or 1(312) 455-8498 (outside USA)  
E: [proteintech@ptglab.com](mailto:proteintech@ptglab.com)  
W: [ptglab.com](http://ptglab.com)

**This product is exclusively available under Proteintech Group brand and is not available to purchase from any other manufacturer.**

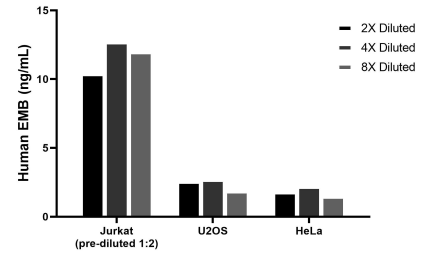
## Selected Validation Data



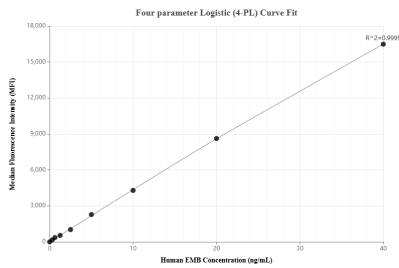
Various lysates were subjected to SDS PAGE followed by western blot with 86946-1-RR (EMB antibody) at dilution of 1:2000 incubated at room temperature for 1.5 hours. This data was developed using the same antibody clone with 86946-1-PBS in a different storage buffer formulation.



Immunofluorescent analysis of (4% PFA) fixed Jurkat cells using EMB antibody (86946-1-RR, Clone: 251953E3) at dilution of 1:200 and CoraLite® 488-Conjugated Goat Anti-Rabbit IgG(H+L) (SA00013-2). This data was developed using the same antibody clone with 86946-1-PBS in a different storage buffer formulation.



The mean EMB concentration was determined to be 11.7 ng/mL in Jurkat cell extract based on a 1.2 mg/mL extract load, 2.4 ng/mL in U2OS cell extract based on a 1.2 mg/mL extract load, 1.8 ng/mL in HeLa cell extract based on a 1.2 mg/mL extract load.



Cytometric bead array standard curve of MP02786-1, EMB Recombinant Matched Antibody Pair, PBS Only. Capture antibody: 86946-1-PBS. Detection antibody: 86946-2-PBS. Standard: Eg6407. Range: 0.312-40 ng/mL