

For Research Use Only

Phospho-LYN (Tyr508) Recombinant monoclonal antibody, PBS Only

Catalog Number: 86947-2-PBS



Basic Information

Catalog Number: 86947-2-PBS	GenBank Accession Number: BC075002	Purification Method: Protein A purification
Size: 100ug, Concentration: 1 mg/ml by Nanodrop;	GeneID (NCBI): 4067	CloneNo.: 251104F11
Source: Rabbit	UNIPROT ID: P07948	
Isotype: IgG	Full Name: v-yes-1 Yamaguchi sarcoma viral related oncogene homolog	
	Calculated MW: 512 aa, 59 kDa	
	Observed MW: 53 kDa, 56 kDa	

Applications

Tested Applications:
WB, Indirect ELISA

Species Specificity:
human

Background Information

LYN, also named as JTK8, p53Lyn and p56Lyn, belongs to the protein kinase superfamily, Tyr protein kinase family and SRC subfamily. The C-terminal tyrosine-508 residue (Tyr-508) in Lyn or the corresponding conserved tyrosine residue in each of the other members of the SFK family is the primary site for regulating tyrosine kinase activity by reversible phosphorylation. Phosphorylation at the tyrosine residue induces a closed conformation that is enzymatically inactive. (PMID: 33004926)

Storage

Storage:
Store at -80°C.

Storage Buffer:
PBS only, pH7.3

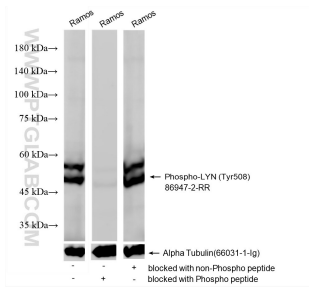
For technical support and original validation data for this product please contact:

T: 1 (888) 4PTGLAB (1-888-478-4522) (toll free in USA), or 1(312) 455-8498 (outside USA)

E: proteintech@ptglab.com
W: ptglab.com

This product is exclusively available under Proteintech Group brand and is not available to purchase from any other manufacturer.

Selected Validation Data



Ramos cell lysates were subjected to SDS PAGE followed by western blot with 80351-3-RR (Phospho-LYN (Tyr508) antibody) blocked with BSA only, Phospho-LYN (Tyr508) peptide or non-Phospho peptide at dilution of 1:1000 incubated at room temperature for 1.5 hours. This data was developed using the same antibody clone with 86947-2-PBS in a different storage buffer formulation.