

For Research Use Only

# Phospho-LYN (Tyr508) Recombinant monoclonal antibody

Catalog Number: 86947-2-RR



## Basic Information

<b>Catalog Number:</b> 86947-2-RR	<b>GenBank Accession Number:</b> BC075002	<b>Purification Method:</b> Protein A purification
<b>Size:</b> 100ul , Concentration: 1000 µg/ml by Nanodrop;	<b>GeneID (NCBI):</b> 4067	<b>CloneNo.:</b> 251104F11
<b>Source:</b> Rabbit	<b>UNIPROT ID:</b> P07948	<b>Recommended Dilutions:</b> WB: 1:500-1:2000
<b>Isotype:</b> IgG	<b>Full Name:</b> v-yes-1 Yamaguchi sarcoma viral related oncogene homolog	
	<b>Calculated MW:</b> 512 aa, 59 kDa	
	<b>Observed MW:</b> 53 kDa, 56 kDa	

## Applications

<b>Tested Applications:</b> WB, ELISA	<b>Positive Controls:</b> WB : Ramos cells,
<b>Species Specificity:</b> human	

## Background Information

LYN, also named as JTK8, p53Lyn and p56Lyn, belongs to the protein kinase superfamily, Tyr protein kinase family and SRC subfamily. The C-terminal tyrosine-508 residue (Tyr-508) in Lyn or the corresponding conserved tyrosine residue in each of the other members of the SFK family is the primary site for regulating tyrosine kinase activity by reversible phosphorylation. Phosphorylation at the tyrosine residue induces a closed conformation that is enzymatically inactive. (PMID: 33004926)

## Storage

**Storage:**  
Store at -20°C. Stable for one year after shipment.  
**Storage Buffer:**  
PBS with 0.02% sodium azide and 50% glycerol, pH7.3  
Aliquoting is unnecessary for -20°C storage

\*\*\* 20ul sizes contain 0.1% BSA

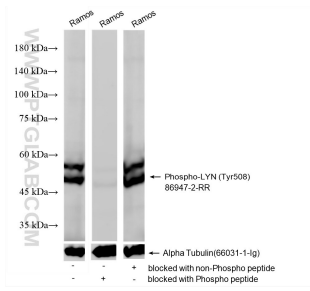
For technical support and original validation data for this product please contact:

T: 1 (888) 4PTGLAB (1-888-478-4522) (toll free in USA), or 1(312) 455-8498 (outside USA)

E: proteintech@ptglab.com  
W: ptglab.com

This product is exclusively available under Proteintech Group brand and is not available to purchase from any other manufacturer.

## Selected Validation Data



Ramos cell lysates were subjected to SDS PAGE followed by western blot with 80351-3-RR (Phospho-LYN (Tyr508) antibody) blocked with BSA only, Phospho-LYN (Tyr508) peptide or non-Phospho peptide at dilution of 1:1000 incubated at room temperature for 1.5 hours.