

For Research Use Only

Cathepsin S Recombinant monoclonal antibody, PBS Only

Catalog Number: 86948-1-PBS



Basic Information

| | | |
|---|--|---|
| Catalog Number: 86948-1-PBS | GenBank Accession Number: BC002642 | Purification Method: Protein A purification |
| Size: 100ug , Concentration: 1 mg/ml by Nanodrop; | GeneID (NCBI): 1520 | CloneNo.: 252053B3 |
| Source: Rabbit | UNIPROT ID: P25774 | |
| Isotype: IgG | Full Name: cathepsin S | |
| Immunogen Catalog Number: AG25881 | Calculated MW: 37 kDa | |
| | Observed MW: 25 kDa, 37 kDa | |

Applications

Tested Applications:
WB, IF/ICC, Indirect ELISA

Species Specificity:
human

Background Information

Cathepsin S (CTSS) is a cysteine protease that plays an important role in extracellular matrix degradation and remodeling, antigen presentation, inflammation, and angiogenesis; it has been identified as a radiation response gene. In malignant tumors, CTSS induces tumor proliferation, invasion and metastasis through various mechanisms. CTSS proteins could be detected in two forms, pro-CTSS (35-37 kDa) and active CTSS (25 kDa) (PMID: 30006610, PMID: 34208434). And in this publication, it was also reported that active CTSS was expressed at higher levels than pro-CTSS in the lysate (PMID: 34208434).

Storage

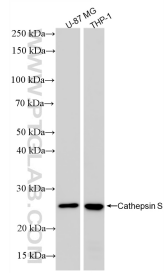
Storage:
Store at -80°C.

Storage Buffer:
PBS only, pH7.3

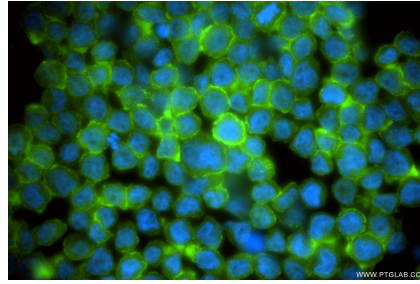
For technical support and original validation data for this product please contact:
T: 1 (888) 4PTGLAB (1-888-478-4522) (toll free in USA), or 1(312) 455-8498 (outside USA) E: proteintech@ptglab.com
W: ptglab.com

This product is exclusively available under Proteintech Group brand and is not available to purchase from any other manufacturer.

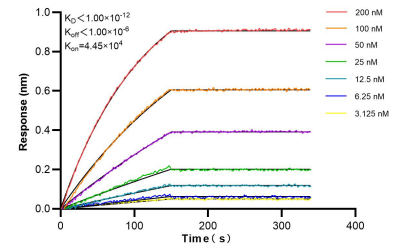
Selected Validation Data



Various lysates were subjected to SDS PAGE followed by western blot with 86948-1-RR (Cathepsin S antibody) at dilution of 1:10000 incubated at room temperature for 1.5 hours. This data was developed using the same antibody clone with 86948-1-PBS in a different storage buffer formulation.



Immunofluorescent analysis of (4% PFA) fixed THP-1 cells using Cathepsin S antibody (86948-1-RR, Clone: 252053B3) at dilution of 1:200 and CoraLite® 488-Conjugated Goat Anti-Rabbit IgG(H+L) (SA00013-2). This data was developed using the same antibody clone with 86948-1-PBS in a different storage buffer formulation.



Biolayer interferometry (BLI) kinetic assays of 86948-1-RR against Human Cathepsin S were performed. The affinity constant is below 1 pM.