

For Research Use Only

# Cathepsin S Recombinant monoclonal antibody

Catalog Number: 86948-1-RR



## Basic Information

<b>Catalog Number:</b> 86948-1-RR	<b>GenBank Accession Number:</b> BC002642	<b>Purification Method:</b> Protein A purification
<b>Size:</b> 100ul , Concentration: 1000 µg/ml by Nanodrop;	<b>GeneID (NCBI):</b> 1520	<b>CloneNo.:</b> 252053B3
<b>Source:</b> Rabbit	<b>UNIPROT ID:</b> P25774	<b>Recommended Dilutions:</b> WB: 1:5000-1:50000 IF/ICC: 1:50-1:500
<b>Isotype:</b> IgG	<b>Full Name:</b> cathepsin S	
<b>Immunogen Catalog Number:</b> AG25881	<b>Calculated MW:</b> 37 kDa	
	<b>Observed MW:</b> 25 kDa, 37 kDa	

## Applications

<b>Tested Applications:</b> WB, IF/ICC, ELISA	<b>Positive Controls:</b> WB : U-87 MG cells, THP-1 cells
<b>Species Specificity:</b> human	<b>IF/ICC :</b> THP-1 cells,

## Background Information

Cathepsin S (CTSS) is a cysteine protease that plays an important role in extracellular matrix degradation and remodeling, antigen presentation, inflammation, and angiogenesis; it has been identified as a radiation response gene. In malignant tumors, CTSS induces tumor proliferation, invasion and metastasis through various mechanisms. CTSS proteins could be detected in two forms, pro-CTSS (35-37 kDa) and active CTSS (25 kDa) (PMID: 30006610, PMID: 34208434). And in this publication, it was also reported that active CTSS was expressed at higher levels than pro-CTSS in the lysate (PMID: 34208434).

## Storage

**Storage:**  
Store at -20°C. Stable for one year after shipment.  
**Storage Buffer:**  
PBS with 0.02% sodium azide and 50% glycerol, pH7.3  
Aliquoting is unnecessary for -20°C storage

\*\*\* 20ul sizes contain 0.1% BSA

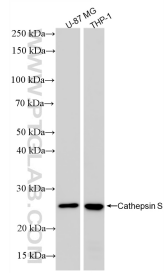
For technical support and original validation data for this product please contact:

T: 1 (888) 4PTGLAB (1-888-478-4522) (toll free in USA), or 1(312) 455-8498 (outside USA)

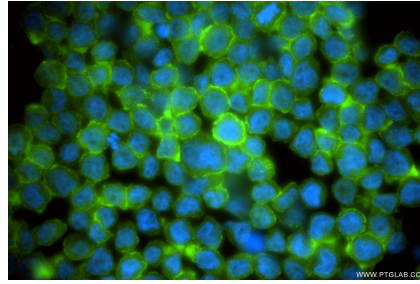
E: [proteintech@ptglab.com](mailto:proteintech@ptglab.com)  
W: [ptglab.com](http://ptglab.com)

This product is exclusively available under Proteintech Group brand and is not available to purchase from any other manufacturer.

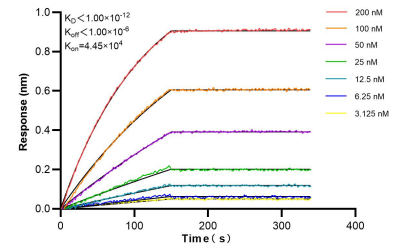
## Selected Validation Data



Various lysates were subjected to SDS PAGE followed by western blot with 86948-1-RR (Cathepsin S antibody) at dilution of 1:10000 incubated at room temperature for 1.5 hours.



Immunofluorescent analysis of (4% PFA) fixed THP-1 cells using Cathepsin S antibody (86948-1-RR, Clone: 252053B3) at dilution of 1:200 and CoraLite® 488-Conjugated Goat Anti-Rabbit IgG(H+L) (SA00013-2).



Bi-layer interferometry (BLI) kinetic assays of 86948-1-RR against Human Cathepsin S were performed. The affinity constant is below 1 pM.