

For Research Use Only

JAM3 Recombinant monoclonal antibody, PBS Only (Detector)

Catalog Number: 86960-1-PBS



Basic Information

Catalog Number: 86960-1-PBS	GenBank Accession Number: NM_032801.5	Purification Method: Protein A purification
Size: 100ug , Concentration: 1 mg/ml by Nanodrop;	GeneID (NCBI): 83700	CloneNo.: 251954C5
Source: Rabbit	UNIPROT ID: Q9BX67-1	
Isotype: IgG	Full Name: junctional adhesion molecule 3	
Immunogen Catalog Number: EG6611	Calculated MW: 35 kDa	
	Observed MW: 40 kDa	

Applications

Tested Applications:
WB, IF/ICC, Cytometric bead array, Indirect ELISA

Species Specificity:
human, mouse

Product Information

86960-1-PBS targets JAM3 as part of a matched antibody pair:

MP02796-1: 86960-2-PBS capture and 86960-1-PBS detection (validated in Cytometric bead array)

Unconjugated rabbit recombinant monoclonal antibody in PBS only (BSA and azide free) storage buffer at a concentration of 1 mg/mL, ready for conjugation. Created using Proteintech's proprietary in-house recombinant technology. Recombinant production enables unrivalled batch-to-batch consistency, easy scale-up, and future security of supply.

This conjugation ready format makes antibodies ideal for use in many applications including: ELISAs, multiplex assays requiring matched pairs, mass cytometry, and multiplex imaging applications. Antibody use should be optimized by the end user for each application and assay.

Background Information

Junctional adhesion molecule 3 (JAM3) is a type I transmembrane glycoprotein containing two Ig-like domains, which is expressed in various tissues and plays a crucial role in cell junctions, cell polarity, and motility (PMID: 34292449; 28931565). It has been proposed that JAM3 participates in leukocyte-platelet interactions, as well as angiogenesis and brain development (PMID: 12208882; 23255084). JAM3 may also be a new marker for predicting the prognosis and immune functions of bladder cancer patients (PMID: 38400838).

Storage

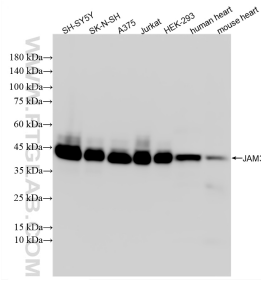
Storage:
Store at -80°C.

Storage Buffer:
PBS only, pH7.3

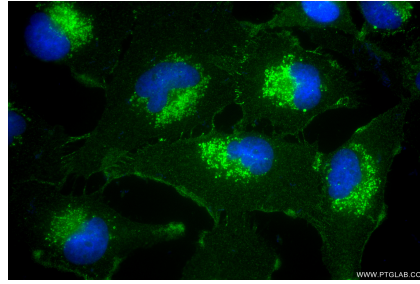
For technical support and original validation data for this product please contact:
T: 1 (888) 4PTGLAB (1-888-478-4522) (toll free in USA), or 1(312) 455-8498 (outside USA) E: proteintech@ptglab.com
W: ptglab.com

This product is exclusively available under Proteintech Group brand and is not available to purchase from any other manufacturer.

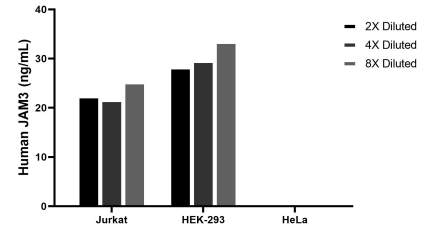
Selected Validation Data



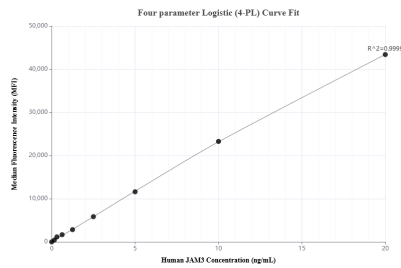
Various lysates were subjected to SDS PAGE followed by western blot with 86960-1-RR (JAM3 antibody) at dilution of 1:2000 incubated at room temperature for 1.5 hours. This data was developed using the same antibody clone with 86960-1-PBS in a different storage buffer formulation.



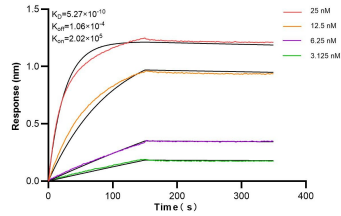
Immunofluorescent analysis of (4% PFA) fixed U-251 cells using JAM3 antibody (86960-1-RR, Clone: 251954C5) at dilution of 1:400 and CoraLite®488-Conjugated Goat Anti-Rabbit IgG(H+L) (SA00013-2). This data was developed using the same antibody clone with 86960-1-PBS in a different storage buffer formulation.



The mean JAM3 concentration was determined to be 23.0 ng/mL in Jurkat cell extract based on a 1.2 mg/mL extract load, 30.4 ng/mL in HEK-293 cell extract based on a 1.2 mg/mL extract load, HeLa cell extract were served as a negative control.



Cytometric bead array standard curve of MP02796-1, JAM3 Recombinant Matched Antibody Pair, PBS Only. Capture antibody: 86960-2-PBS. Detection antibody: 86960-1-PBS. Standard: Eg6611. Range: 0.156-20 ng/mL



Biolayer interferometry (BLI) kinetic assays of 86960-1-RR against Human JAM3 were performed. The affinity constant is 0.527 nM.