

For Research Use Only

JAM3 Recombinant monoclonal antibody

Catalog Number:86960-1-RR



Basic Information

Catalog Number: 86960-1-RR	GenBank Accession Number: NM_032801.5	Purification Method: Protein A purification
Size: 100ul , Concentration: 1000 µg/ml by Nanodrop;	GeneID (NCBI): 83700	CloneNo.: 251954C5
Source: Rabbit	UNIPROT ID: Q9BX67-1	Recommended Dilutions: WB: 1:1000-1:4000 IF/ICC: 1:200-1:800
Isotype: IgG	Full Name: junctional adhesion molecule 3	
Immunogen Catalog Number: EG6611	Calculated MW: 35 kDa	
	Observed MW: 40 kDa	

Applications

Tested Applications: WB, IF/ICC, ELISA	Positive Controls:
Species Specificity: human, mouse	WB : SH-SY5Y cells, SK-N-SH cells, A375 cells, Jurkat cells, HEK-293 cells, human heart tissue, mouse heart tissue
	IF/ICC : U-251 cells,

Background Information

Junctional adhesion molecule 3 (JAM3) is a type I transmembrane glycoprotein containing two Ig-like domains, which is expressed in various tissues and plays a crucial role in cell junctions, cell polarity, and motility (PMID: 34292449; 28931565). It has been proposed that JAM3 participates in leukocyte-platelet interactions, as well as angiogenesis and brain development (PMID: 12208882; 23255084). JAM3 may also be a new marker for predicting the prognosis and immune functions of bladder cancer patients (PMID: 38400838).

Storage

Storage:
Store at -20°C. Stable for one year after shipment.
Storage Buffer:
PBS with 0.02% sodium azide and 50% glycerol, pH7.3
Aliquoting is unnecessary for -20°C storage

*** 20ul sizes contain 0.1% BSA

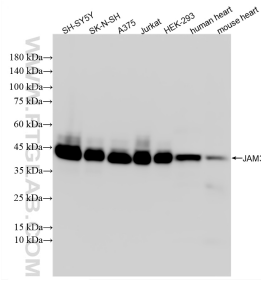
For technical support and original validation data for this product please contact:

T: 1 (888) 4PTGLAB (1-888-478-4522) (toll free in USA), or 1(312) 455-8498 (outside USA)

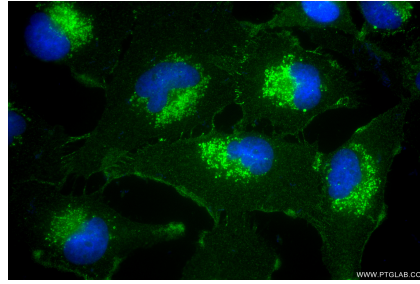
E: proteintech@ptglab.com
W: ptglab.com

This product is exclusively available under Proteintech Group brand and is not available to purchase from any other manufacturer.

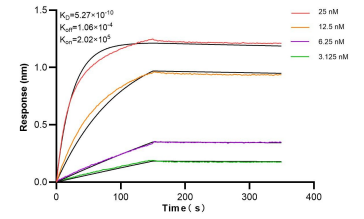
Selected Validation Data



Various lysates were subjected to SDS PAGE followed by western blot with 86960-1-RR (JAM3 antibody) at dilution of 1:2000 incubated at room temperature for 1.5 hours.



Immunofluorescent analysis of (4% PFA) fixed U-251 cells using JAM3 antibody (86960-1-RR, Clone: 251954C5) at dilution of 1:400 and CoraLite®488-Conjugated Goat Anti-Rabbit IgG(H+L) (SA00013-2).



Bi-layer interferometry (BLI) kinetic assays of 86960-1-RR against Human JAM3 were performed. The affinity constant is 0.527 nM.