

For Research Use Only

JAM3 Recombinant monoclonal antibody, PBS Only (Capture)

Catalog Number: 86960-2-PBS



Basic Information

Catalog Number: 86960-2-PBS	GenBank Accession Number: NM_032801.5	Purification Method: Protein A purification
Size: 100ug , Concentration: 1 mg/ml by Nanodrop;	GeneID (NCBI): 83700	CloneNo.: 251954A10
Source: Rabbit	UNIPROT ID: Q9BX67-1	
Isotype: IgG	Full Name: junctional adhesion molecule 3	
Immunogen Catalog Number: EG6611	Calculated MW: 35 kDa	

Applications

Tested Applications:
Cytometric bead array, Sandwich ELISA, Indirect ELISA

Species Specificity:
human

Product Information

86960-2-PBS targets JAM3 as part of a matched antibody pair:

MP02796-1: 86960-2-PBS capture and 86960-1-PBS detection (validated in Cytometric bead array)

MP02796-2: 86960-2-PBS capture and 86960-3-PBS detection (validated in Sandwich ELISA)

Unconjugated rabbit recombinant monoclonal antibody in PBS only (BSA and azide free) storage buffer at a concentration of 1 mg/mL, ready for conjugation. Created using Proteintech's proprietary in-house recombinant technology. Recombinant production enables unrivalled batch-to-batch consistency, easy scale-up, and future security of supply.

This conjugation ready format makes antibodies ideal for use in many applications including: ELISAs, multiplex assays requiring matched pairs, mass cytometry, and multiplex imaging applications. Antibody use should be optimized by the end user for each application and assay.

Storage

Storage:
Store at -80°C.
Storage Buffer:
PBS only, pH7.3

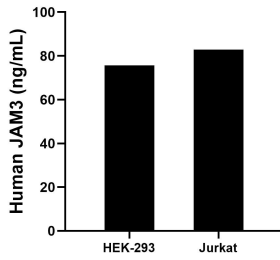
For technical support and original validation data for this product please contact:

T: 1 (888) 4PTGLAB (1-888-478-4522) (toll free in USA), or 1(312) 455-8498 (outside USA)

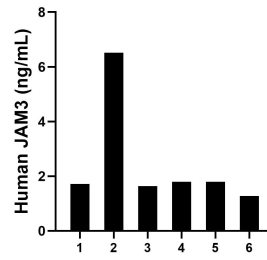
E: proteintech@ptglab.com
W: ptglab.com

This product is exclusively available under Proteintech Group brand and is not available to purchase from any other manufacturer.

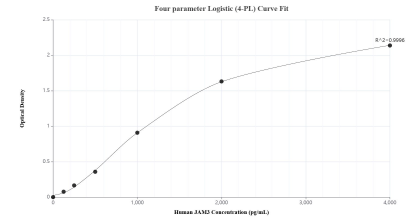
Selected Validation Data



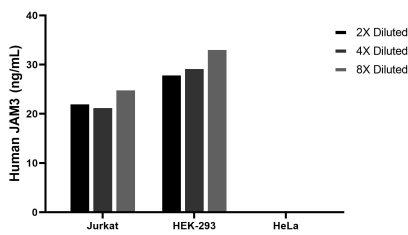
The mean JAM3 concentration was determined to be 75.6 ng/mL in HEK-293 cell extract based on a 1.2 mg/mL extract load and 82.8 ng/mL in Jurkat cell extract based on a 1.2 mg/mL extract load.



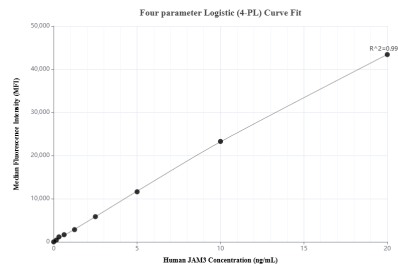
Serum of eight individual healthy human donors was measured. The JAM3 concentration of detected samples was determined to be 2.5 ng/mL with a range of 1.3-6.5 ng/mL.



Sandwich ELISA standard curve of MP02796-2, Human JAM3 Recombinant Matched Antibody Pair - PBS only. 86960-2-PBS was coated to a plate as the capture antibody and incubated with serial dilutions of standard Eg6611. 86960-3-PBS was HRP conjugated as the detection antibody. Range: 125--4000 pg/mL.



The mean JAM3 concentration was determined to be 23.0 ng/mL in Jurkat cell extract based on a 1.2 mg/mL extract load, 30.4 ng/mL in HEK-293 cell extract based on a 1.2 mg/mL extract load, HeLa cell extract were served as a negative control.



Cytometric bead array standard curve of MP02796-1, JAM3 Recombinant Matched Antibody Pair, PBS Only. Capture antibody: 86960-2-PBS. Detection antibody: 86960-1-PBS. Standard: Eg6611. Range: 0.156-20 ng/mL.