

For Research Use Only

KAT6B/MORF Recombinant monoclonal antibody

Catalog Number: 86962-12-RR



Basic Information

Catalog Number:

86962-12-RR

Size:

100ul , Concentration: 1000 µg/ml by Nanodrop;

Source:

Rabbit

Isotype:

IgG

GenBank Accession Number:

BC150618

GeneID (NCBI):

23522

UNIPROT ID:

Q8WYB5

Full Name:

MYST histone acetyltransferase (monocytic leukemia) 4

Calculated MW:

2073 aa, 231 kDa

Observed MW:

231-250 kDa

Purification Method:

Protein A purification

CloneNo.:

253286G3

Recommended Dilutions:

WB: 1:5000-1:50000

Applications

Tested Applications:

WB, ELISA

Species Specificity:

human

Positive Controls:

WB : BxPC-3 cells, PC-3 cells, U-251 cells, SK-BR-3 cells, MDA-MB-231 cells, LN-229 cells

Background Information

KAT6B (also known as MORF or MYST4) is a member of the MYST family of histone acetyltransferases that catalyzes acetylation of histones H3 and H4, thereby regulating chromatin structure and gene transcription. It plays essential roles in brain development, hematopoiesis, and skeletal morphogenesis. Mutations in the KAT6B gene cause developmental disorders such as Genitopatellar syndrome and Ohdo syndrome, while chromosomal translocations generating KAT6B-CREBBP fusion proteins drive a subset of acute myeloid leukemia.

Storage

Storage:

Store at -20°C. Stable for one year after shipment.

Storage Buffer:

PBS with 0.02% sodium azide and 50% glycerol, pH7.3

Aliquoting is unnecessary for -20°C storage

*** 20ul sizes contain 0.1% BSA

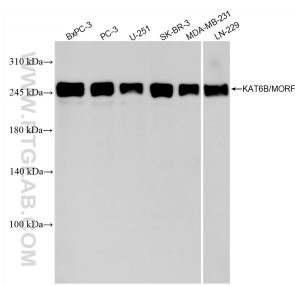
For technical support and original validation data for this product please contact:

T: 1 (888) 4PTGLAB (1-888-478-4522) (toll free in USA), or 1(312) 455-8498 (outside USA)

E: proteintech@ptglab.com
W: ptglab.com

This product is exclusively available under Proteintech Group brand and is not available to purchase from any other manufacturer.

Selected Validation Data



Various lysates were subjected to SDS PAGE followed by western blot with 86962-12-RR (MYST4 antibody) at dilution of 1:10000 incubated at room temperature for 1.5 hours.