

For Research Use Only

# Syntenin-1 Recombinant monoclonal antibody, PBS Only (Detector)

Catalog Number: 86968-1-PBS



## Basic Information

<b>Catalog Number:</b> 86968-1-PBS	<b>GenBank Accession Number:</b> BC113674	<b>Purification Method:</b> Protein A purification
<b>Size:</b> 100ug , Concentration: 1 mg/ml by Nanodrop;	<b>GeneID (NCBI):</b> 6386	<b>CloneNo.:</b> 252107H1
<b>Source:</b> Rabbit	<b>UNIPROT ID:</b> O00560	
<b>Isotype:</b> IgG	<b>Full Name:</b> syndecan binding protein (syntenin)	
<b>Immunogen Catalog Number:</b> AG18078	<b>Calculated MW:</b> 298 aa, 32 kDa	
	<b>Observed MW:</b> 32 kDa	

## Applications

**Tested Applications:**  
WB, IHC, IF/ICC, IP, Sandwich ELISA, Indirect ELISA

**Species Specificity:**  
human

## Product Information

86968-1-PBS targets Syntenin-1 as part of a matched antibody pair:

MP02969-1: 86968-2-PBS capture and 86968-1-PBS detection (validated in Sandwich ELISA)

Unconjugated rabbit recombinant monoclonal antibody in PBS only (BSA and azide free) storage buffer at a concentration of 1 mg/mL, ready for conjugation. Created using Proteintech's proprietary in-house recombinant technology. Recombinant production enables unrivalled batch-to-batch consistency, easy scale-up, and future security of supply.

This conjugation ready format makes antibodies ideal for use in many applications including: ELISAs, multiplex assays requiring matched pairs, mass cytometry, and multiplex imaging applications. Antibody use should be optimized by the end user for each application and assay.

## Background Information

Syntenin-1, also known as SDCBP (syndecan binding protein) and MDA-9 (melanoma differentiation-associated protein 9), was initially identified as a molecule linking syndecan-mediated signaling to the cytoskeleton. Syntenin-1 is a PDZ-domain-containing molecule that has many interaction partners, and regulates transmembrane-receptor trafficking, cell adhesion, tumor-cell metastasis and neuronal-synapse function. Syntenin-1 is primarily localized to membrane-associated adherens junctions and focal adhesions but is also found at the endoplasmic reticulum and nucleus.

## Storage

**Storage:**  
Store at -80°C.  
**Storage Buffer:**  
PBS only, pH7.3

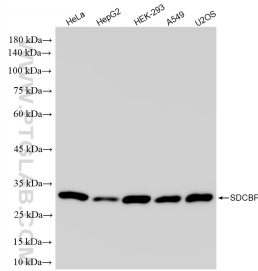
For technical support and original validation data for this product please contact:

T: 1 (888) 4PTGLAB (1-888-478-4522) (toll free in USA), or 1(312) 455-8498 (outside USA)

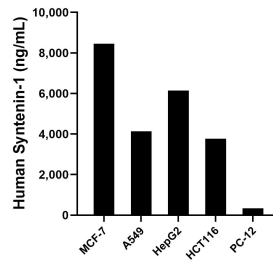
E: [proteintech@ptglab.com](mailto:proteintech@ptglab.com)  
W: [ptglab.com](http://ptglab.com)

**This product is exclusively available under Proteintech Group brand and is not available to purchase from any other manufacturer.**

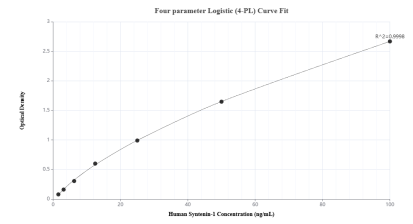
## Selected Validation Data



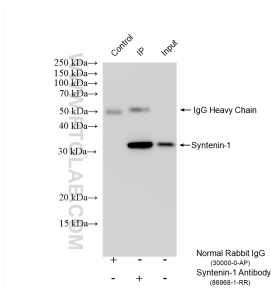
Various lysates were subjected to SDS PAGE followed by western blot with 86968-1-RR (Syntenin-1 antibody) at dilution of 1:5000 incubated at room temperature for 1.5 hours. This data was developed using the same antibody clone with 86968-1-PBS in a different storage buffer formulation.



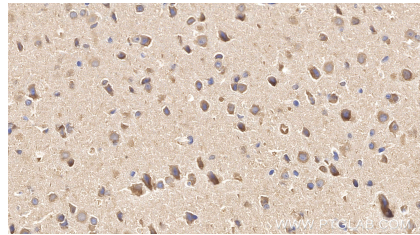
The mean Syntenin-1 concentration was determined to be 8,459.69 ng/mL in MCF-7 cell extract based on a 1.2 mg/mL extract load, 4,141.00 ng/mL in A549 cell extract based on a 1.2 mg/mL extract load, 6,144.14 ng/mL in HepG2 cell extract based on a 1.2 mg/mL extract load, 3,765.64 ng/mL in HCT 116 cell extract based on a 1.3 mg/mL extract load and 339.31 ng/mL in PC-12 cell extract based on a 1.4 mg/mL extract load.



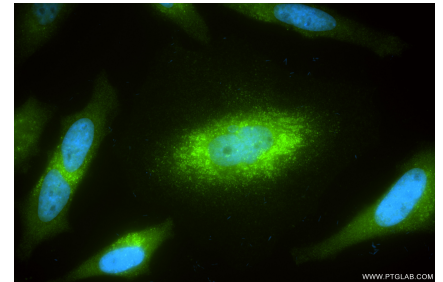
Sandwich ELISA standard curve of MP02969-1, Human Syntenin-1 Recombinant Matched Antibody Pair - PBS only. 86968-2-PBS was coated to a plate as the capture antibody and incubated with serial dilutions of standard Ag18078. 86968-1-PBS was HRP conjugated as the detection antibody. Range: 1.56-100 ng/mL



IP result of anti-Syntenin-1 (IP:86968-1-RR, 4ug; Detection:86968-1-RR 1:1000) with HeLa cells lysate 1480 ug. This data was developed using the same antibody clone with 86968-1-PBS in a different storage buffer formulation.



Immunohistochemical analysis of paraffin-embedded mouse brain tissue slide using 86968-1-RR (Syntenin-1 antibody) at dilution of 1:1000 (under 40x lens). Heat mediated antigen retrieval with Tris-EDTA buffer (pH 9.0). This data was developed using the same antibody clone with 86968-1-PBS in a different storage buffer formulation.



Immunofluorescent analysis of (4% PFA) fixed HeLa cells using Syntenin-1 antibody (86968-1-RR, Clone: 252107H1) at dilution of 1:400 and CoraLite@488-Conjugated Goat Anti-Rabbit IgG(H+L) (SA00013-2). This data was developed using the same antibody clone with 86968-1-PBS in a different storage buffer formulation.