

For Research Use Only

Syntenin-1 Recombinant monoclonal antibody

Catalog Number: 86968-1-RR



Basic Information

Catalog Number: 86968-1-RR	GenBank Accession Number: BC113674	Purification Method: Protein A purification
Size: 100ul , Concentration: 1000 µg/ml by Nanodrop;	GeneID (NCBI): 6386	CloneNo.: 252107H1
Source: Rabbit	UNIPROT ID: O00560	Recommended Dilutions: WB: 1:2000-1:10000 IP: 0.5-4.0 ug for 1.0-3.0 mg of total protein lysate IHC: 1:500-1:2000 IF/ICC: 1:200-1:800
Isotype: IgG	Full Name: syndecan binding protein (syntenin)	
Immunogen Catalog Number: AG18078	Calculated MW: 298 aa, 32 kDa	
	Observed MW: 32 kDa	

Applications

Tested Applications:
WB, IHC, IF/ICC, IP, ELISA

Species Specificity:
human

Note-IHC: suggested antigen retrieval with TE buffer pH 9.0; (*) Alternatively, antigen retrieval may be performed with citrate buffer pH 6.0

Positive Controls:

WB : HeLa cells, HepG2 cells, HEK-293 cells, A549 cells, U2OS cells

IP : HeLa cells,

IHC : mouse brain tissue,

IF/ICC : HeLa cells,

Background Information

Syntenin-1, also known as SDCBP (syndecan binding protein) and MDA-9 (melanoma differentiation-associated protein 9), was initially identified as a molecule linking syndecan-mediated signaling to the cytoskeleton. Syntenin-1 is a PDZ-domain-containing molecule that has many interaction partners, and regulates transmembrane-receptor trafficking, cell adhesion, tumor-cell metastasis and neuronal-synapse function. Syntenin-1 is primarily localized to membrane-associated adherens junctions and focal adhesions but is also found at the endoplasmic reticulum and nucleus.

Storage

Storage:

Store at -20°C. Stable for one year after shipment.

Storage Buffer:

PBS with 0.02% sodium azide and 50% glycerol, pH7.3

Aliquoting is unnecessary for -20°C storage

***** 20ul sizes contain 0.1% BSA**

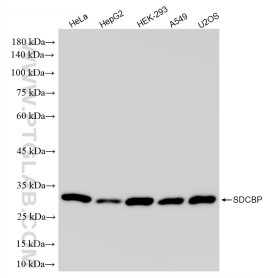
For technical support and original validation data for this product please contact:

T: 1 (888) 4PTGLAB (1-888-478-4522) (toll free in USA), or 1(312) 455-8498 (outside USA)

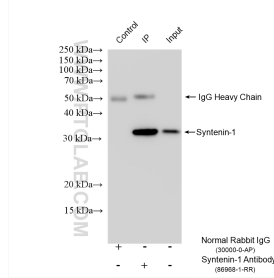
E: proteintech@ptglab.com
W: ptglab.com

This product is exclusively available under Proteintech Group brand and is not available to purchase from any other manufacturer.

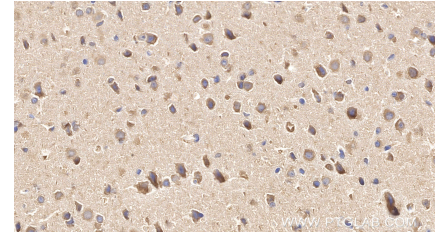
Selected Validation Data



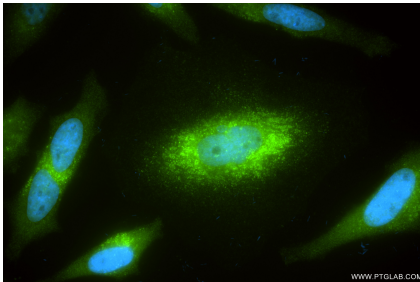
Various lysates were subjected to SDS PAGE followed by western blot with 86968-1-RR (Syntenin-1 antibody) at dilution of 1:5000 incubated at room temperature for 1.5 hours.



IP result of anti-Syntenin-1 (IP:86968-1-RR, 4ug; Detection:86968-1-RR 1:1000) with HeLa cells lysate 1480 ug.



Immunohistochemical analysis of paraffin-embedded mouse brain tissue slide using 86968-1-RR (Syntenin-1 antibody) at dilution of 1:1000 (under 40x lens). Heat mediated antigen retrieval with Tris-EDTA buffer (pH 9.0).



Immunofluorescent analysis of (4% PFA) fixed HeLa cells using Syntenin-1 antibody (86968-1-RR, Clone: 252107H1) at dilution of 1:400 and CoraLite@488-Conjugated Goat Anti-Rabbit IgG(H+L) (SA00013-2).