

For Research Use Only

KIF7 Recombinant monoclonal antibody

Catalog Number: 86970-1-RR



Basic Information

Catalog Number: 86970-1-RR	GenBank Accession Number: BC112271	Purification Method: Protein A purification
Size: 100ul , Concentration: 1000 µg/ml by Nanodrop;	GeneID (NCBI): 374654	CloneNo.: 252078H3
Source: Rabbit	UNIPROT ID: Q2M1P5	Recommended Dilutions: WB: 1:2000-1:10000
Isotype: IgG	Full Name: kinesin family member 7	
Immunogen Catalog Number: AG19119	Calculated MW: 1343 aa, 151 kDa	
	Observed MW: 150, 170 kDa	

Applications

Tested Applications: WB, ELISA	Positive Controls: WB : HEK-293 cells, HeLa cells, Jurkat cells
Species Specificity: human	

Background Information

KIF7(Kinesin family member 7) is a microtubule interacting protein that functions to regulate Hh signaling by maintaining the architecture of the primary cilium, a complex microtubule-based organelle with many signal transduction functions (PMID: 26439735). KIF7 has been shown to have both negative and positive roles in Shh signal transduction. Without a ligand, KIF7 localizes to the cilium base where it forms a complex with Gli proteins and other pathway components and promotes the processing of GliRs (PMID: 21552264).

Storage

Storage:
Store at -20°C. Stable for one year after shipment.
Storage Buffer:
PBS with 0.02% sodium azide and 50% glycerol, pH7.3
Aliquoting is unnecessary for -20°C storage

*** 20ul sizes contain 0.1% BSA

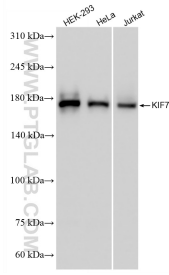
For technical support and original validation data for this product please contact:

T: 1 (888) 4PTGLAB (1-888-478-4522) (toll free
in USA), or 1(312) 455-8498 (outside USA)

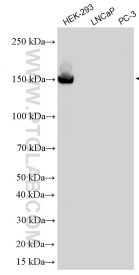
E: proteintech@ptglab.com
W: ptglab.com

This product is exclusively available under Proteintech Group brand and is not available to purchase from any other manufacturer.

Selected Validation Data



Various lysates were subjected to SDS PAGE followed by western blot with 86970-1-RR (KIF7 antibody) at dilution of 1:5000 incubated at room temperature for 1.5 hours.



Various lysates were subjected to SDS PAGE followed by western blot with 86970-1-RR (KIF7 antibody) at dilution of 1:5000 incubated at room temperature for 1.5 hours.