

For Research Use Only

FIGNL1 Recombinant monoclonal antibody, PBS Only

Catalog Number: 86971-1-PBS



Basic Information

Catalog Number: 86971-1-PBS	GenBank Accession Number: BC051867	Purification Method: Protein A purification
Size: 100ug , Concentration: 1 mg/ml by Nanodrop;	GeneID (NCBI): 63979	CloneNo.: 252109F9
Source: Rabbit	UNIPROT ID: Q6PIW4	
Isotype: IgG	Full Name: fidgetin-like 1	
Immunogen Catalog Number: AG11709	Calculated MW: 674 aa, 74 kDa	
	Observed MW: 75 kDa	

Applications

Tested Applications:
WB, Indirect ELISA

Species Specificity:
human, mouse, rat

Background Information

Fidgetin-like 1 (FIGNL1), a subfamily member of ATPases, is associated with diverse cellular activities (AAA proteins). FIGNL1 is involved in DNA repair. FIGNL1 plays a crucial role in the occurrence and development of malignant tumors. FIGNL1 participates in the prognosis, promoter methylation, and immune infiltrates in KIRP, LGG, and LIHC (PMID: 35232348).

Storage

Storage:
Store at -80°C.

Storage Buffer:
PBS only, pH7.3

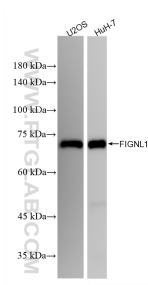
For technical support and original validation data for this product please contact:

T: 1 (888) 4PTGLAB (1-888-478-4522) (toll free in USA), or 1(312) 455-8498 (outside USA)

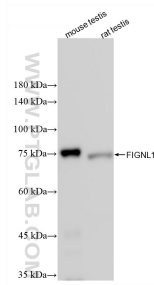
E: proteintech@ptglab.com
W: ptglab.com

This product is exclusively available under Proteintech Group brand and is not available to purchase from any other manufacturer.

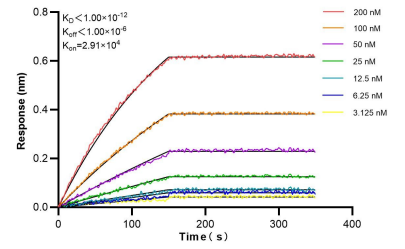
Selected Validation Data



Various lysates were subjected to SDS PAGE followed by western blot with 86971-1-RR (FIGLN1 antibody) at dilution of 1:5000 incubated at room temperature for 1.5 hours. This data was developed using the same antibody clone with 86971-1-PBS in a different storage buffer formulation.



Various lysates were subjected to SDS PAGE followed by western blot with 86971-1-RR (FIGLN1 antibody) at dilution of 1:5000 incubated at room temperature for 1.5 hours. This data was developed using the same antibody clone with 86971-1-PBS in a different storage buffer formulation.



Biolayer interferometry (BLI) kinetic assays of 86971-1-RR against Human FIGLN1 were performed. The affinity constant is below 1 pM.