

For Research Use Only

# FIGNL1 Recombinant monoclonal antibody

Catalog Number:86971-1-RR



## Basic Information

<b>Catalog Number:</b> 86971-1-RR	<b>GenBank Accession Number:</b> BC051867	<b>Purification Method:</b> Protein A purification
<b>Size:</b> 100ul , Concentration: 1000 µg/ml by Nanodrop;	<b>GeneID (NCBI):</b> 63979	<b>CloneNo.:</b> 252109F9
<b>Source:</b> Rabbit	<b>UNIPROT ID:</b> Q6PIW4	<b>Recommended Dilutions:</b> WB: 1:2000-1:10000
<b>Isotype:</b> IgG	<b>Full Name:</b> fidgetin-like 1	
<b>Immunogen Catalog Number:</b> AG11709	<b>Calculated MW:</b> 674 aa, 74 kDa	
	<b>Observed MW:</b> 75 kDa	

## Applications

<b>Tested Applications:</b> WB, ELISA	<b>Positive Controls:</b> WB : U2OS cells, mouse testis tissue, rat testis tissue, HuH-7 cells
<b>Species Specificity:</b> human, mouse, rat	

## Background Information

Fidgetin-like 1 (FIGNL1), a subfamily member of ATPases, is associated with diverse cellular activities (AAA proteins). FIGNL1 is involved in DNA repair. FIGNL1 plays a crucial role in the occurrence and development of malignant tumors. FIGNL1 participates in the prognosis, promoter methylation, and immune infiltrates in KIRP, LGG, and LIHC (PMID: 35232348).

## Storage

**Storage:**  
Store at -20°C. Stable for one year after shipment.  
**Storage Buffer:**  
PBS with 0.02% sodium azide and 50% glycerol, pH7.3  
Aliquoting is unnecessary for -20°C storage

\*\*\* 20ul sizes contain 0.1% BSA

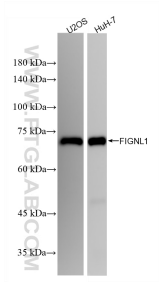
For technical support and original validation data for this product please contact:

T: 1 (888) 4PTGLAB (1-888-478-4522) (toll free in USA), or 1(312) 455-8498 (outside USA)

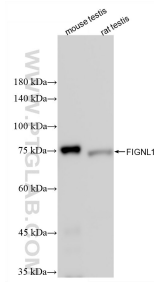
E: proteintech@ptglab.com  
W: ptglab.com

This product is exclusively available under Proteintech Group brand and is not available to purchase from any other manufacturer.

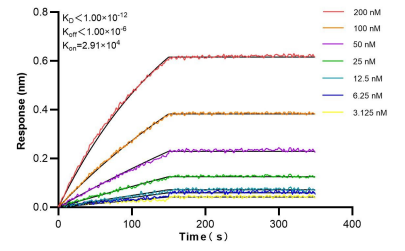
## Selected Validation Data



Various lysates were subjected to SDS PAGE followed by western blot with 86971-1-RR (FIGLN1 antibody) at dilution of 1:5000 incubated at room temperature for 1.5 hours.



Various lysates were subjected to SDS PAGE followed by western blot with 86971-1-RR (FIGLN1 antibody) at dilution of 1:5000 incubated at room temperature for 1.5 hours.



Biolayer interferometry (BLI) kinetic assays of 86971-1-RR against Human FIGLN1 were performed. The affinity constant is below 1 pM.